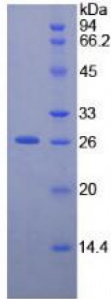


## Human Neurofilament 3 (NEF3) Protein

Catalogue No.: abx068245



SDS-PAGE analysis of Human NEFM Protein.

Recombinant NEFM is a recombinant protein from Human. It is produced in E.coli using Prokaryotic expression.

**Target:** Neurofilament 3 (NEF3)

**Origin:** Human

**Host:** E. coli

**Tested Applications:** ELISA, WB, IP, SDS-PAGE

**Purity:** > 95%

**Form:** Lyophilized

**Conjugation:** Unconjugated

**Storage:** Store at 2-8 °C for up to one month. Store at -80 °C for up to one year. Avoid repeated freeze/thaw cycles.

**Expression:** Recombinant

**Molecular Weight:** 26.2 kDa

**Swiss Prot:** [P07197](#)

**Sequence Fragment:** Leu105-Gln287

**Sequence:**  
 MGSSHHHHHH SSGLVPRGSH MASMTGGQQM GRGSEF- LQQLND RFAGYIEKVH YLEQQNKEIE  
 AEIQALRQKQ ASHAQLGDAY DQEIRELRAT LEMVNHEKAQ VQLDSDHLEE DIHRLKERFE  
 EEARLRDDTE AAIRALRKDI EEASLVKVEL DKKVQSLQDE VAFLRSNHEE EVADLLAQIQ  
 ASHITVERKD YLKTDISTAL KEIRSQLESH SDQNMHQ

**Tag:** Two N-terminal tags, His-tag and T7-tag

Abbexa Ltd, Innovation Centre, Cambridge Science Park, Cambridge, CB4 0EY, UK  
Telephone: +44 (0) 1223 755950 - Fax: +44 (0) 1223 755951 - E-Mail: info@abbexa.com

**Activity:** Not tested

**Concentration:** Prior to lyophilization: 200 µg/ml

**Buffer:** Prior to lyophilization: 20 mM Tris, 150 mM NaCl, pH 8.0, containing 1 mM EDTA, 1 mM DTT, 0.01% Sarcosyl, 5% Trehalose and Proclin-300.

**Note:** This product is for research use only.