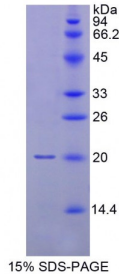


## Human Myosin Light Chain 9, Regulatory (MYL9) Protein

Catalogue No.: abx068174



SDS-PAGE analysis of Human MYL9 Protein.

Recombinant Myosin Light Chain 9, Regulatory (MYL9) is a recombinant protein from Human. It is produced in E.coli using Prokaryotic expression.

**Target:** Myosin Light Chain 9, Regulatory (MYL9)

**Origin:** Human

**Host:** E. coli

**Tested Applications:** ELISA, WB, IP, SDS-PAGE

**Purity:** > 95%

**Form:** Lyophilized

**Conjugation:** Unconjugated

**Storage:** Store at 2-8 °C for up to one month. Store at -80 °C for up to one year. Avoid repeated freeze/thaw cycles.

**Expression:** Recombinant

**Molecular Weight:** 19.9 kDa

**Swiss Prot:** [P24844](#)

**Sequence Fragment:** Arg5-Leu163

**Sequence:** MGHHHHHHSG SEF-RAKAKT TKKRPQRATS NVFAMFDQSQ IQEFKEAFNM IDQNRDGFID  
KEDLHDMLAS LGKNPTDEYL EGM MSEAPGP INFTMFLTMF GEKLN GTDPE DVIRNAFACF  
DEEASGFIHE DHLRELLTTM GDRFTDEEVD EMYREAPIDK KGNFN YVEFT RIL

**Tag:** N-terminal His-tag

Abbexa Ltd, Innovation Centre, Cambridge Science Park, Cambridge, CB4 0EY, UK  
Telephone: +44 (0) 1223 755950 - Fax: +44 (0) 1223 755951 - E-Mail: info@abbexa.com

**Activity:** Not tested

**Concentration:** Prior to lyophilization: 200 µg/ml

**Buffer:** Prior to lyophilization: PBS, pH 7.4, containing 0.01% Sarcosyl, 1 mM DTT, 5% Trehalose and Proclin-300.

**Note:** This product is for research use only.