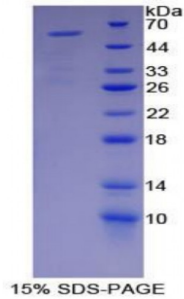


Mouse Myosin Heavy Chain 2, Skeletal Muscle, Adult (MYH2) Protein

Catalogue No.: abx068144



SDS-PAGE analysis of Mouse MYH2 Protein.

Recombinant Myosin Heavy Chain 2, Skeletal Muscle, Adult (MYH2) is a recombinant protein from Mouse. It is produced in E.coli using Prokaryotic expression.

Target: Myosin Heavy Chain 2, Skeletal Muscle, Adult (MYH2)**Origin:** Mouse**Host:** E. coli**Tested Applications:** ELISA, WB, IP, SDS-PAGE**Purity:** > 95%**Form:** Lyophilized**Conjugation:** Unconjugated**Storage:** Store at 2-8 °C for up to one month. Store at -80 °C for up to one year. Avoid repeated freeze/thaw cycles.**Expression:** Recombinant**Molecular Weight:** 54.2 kDa**Swiss Prot:** [I6L963](#)**Sequence Fragment:** Leu1238-Ala1472

Abbexa Ltd, Innovation Centre, Cambridge Science Park, Cambridge, CB4 0EY, UK
Telephone: +44 (0) 1223 755950 - Fax: +44 (0) 1223 755951 - E-Mail: info@abbexa.com

Sequence: MRNKKFELGL EFPNLPYYID GDVKLTQSMA IIRYIADKHN MLGGCPKERA EISMLEGAVL
DIRYGVSRIA YSKDFETLKV DFLSKLPEML KMFEDRLCHK TYLNGDHSVTH PDFMLYDALD
VVLYMDPMCL DAFPCLVCFK KRIEAIQID KYLKSSKYIA WPLQGWQATF GGGDHPPKSD
GSTSGSGHHH HHSAGLVPR GSTAIGMKET AAACFERQHM DSPDLGTLEV LFQGPLGSEF-LAS
NVETVSKAKG NLEKMCRTLE DQVSELKSKE EEQRLINDL TSQRGRLQTE SGEFSRQLDE
KEALVSQLSR GKQFTQQIE ELKRQLEEEV KAKNALAHAL QSSRHDCDLL REYEEEEQES
KAELQRALSK ANSEVAQWRT KYETDAIQRT EELEEAKKKL AQRLQAAEEH VEAVNAKCAS
LEKTKQRLQN EVEDLMLDVE RTNAACAALD KKQRNFDKIL AEWKQKYEET HA

Tag: Two N-terminal tags, His-tag and GST-tag

Activity: Not tested

Concentration: Prior to lyophilization: 200 µg/ml

Buffer: Prior to lyophilization: PBS, pH 7.4, containing 0.01% Sarcosyl, 1 mM DTT, 5% Trehalose and Proclin-300.

Note: This product is for research use only.