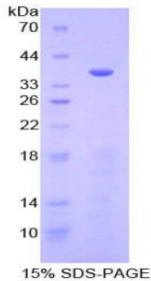


Abbexa Ltd, Innovation Centre, Cambridge Science Park, Cambridge, CB4 0EY, UK  
Telephone: +44 (0) 1223 755950 - Fax: +44 (0) 1223 755951 - E-Mail: info@abbexa.com

## Human Meprin A Alpha (MEP1a) Protein

Catalogue No.: abx067994



SDS-PAGE analysis of Human Meprin A alpha Protein.

Recombinant Meprin A Alpha (MEP1a) is a recombinant protein from Human. It is produced in E.coli using Prokaryotic expression.

**Target:** Meprin A Alpha (MEP1a)

**Origin:** Human

**Host:** E. coli

**Tested Applications:** ELISA, WB, IP, SDS-PAGE

**Purity:** > 95%

**Form:** Lyophilized

**Conjugation:** Unconjugated

**Storage:** Store at 2-8 °C for up to one month. Store at -80 °C for up to one year. Avoid repeated freeze/thaw cycles.

**Expression:** Recombinant

**Molecular Weight:** 37.1 kDa

**Swiss Prot:** [Q16819](#)

**Sequence Fragment:** His213-Val506

Abbexa Ltd, Innovation Centre, Cambridge Science Park, Cambridge, CB4 0EY, UK  
Telephone: +44 (0) 1223 755950 - Fax: +44 (0) 1223 755951 - E-Mail: info@abbexa.com

**Sequence:** MGSSHHHHH SSGLVPRGSH MASMTGGQQM GRGSEF- HYQPFSFN KNASVPTITA KIPEFNSIIG  
QRLDFSAIDL ERLNRMYNCT TTHTLLDHCT FEKANICGMI QGTRDDTDWA HQDSAQAGEV  
DHTLLGQCTG AGYFMQFSTS SGSAAEAALL ESRILYPKRK QQCLQFFYKM TGSPSDRLVV  
WVRRDDSTGN VRKLVKVQTF QGDDDHNWKI AHVVLKEEQK FRYLFQGTKG DPQNSTGGIY  
LDDITLTETP CPTGVWTVRN FSQVLENTSK GDKLQSPRFY NSEGYGFGVT LYPNSRESSG  
YLRLAFHVCS GENDAILEWP VENRQV

**Tag:** Two N-terminal tags, His-tag and T7-tag

**Activity:** Not tested

**Concentration:** Prior to lyophilization: 200 µg/ml

**Buffer:** Prior to lyophilization: PBS, pH 7.4, containing 0.01% Sarcosyl, 1 mM DTT, 5% Trehalose and Proclin-300.

**Note:** This product is for research use only.