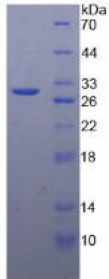


Abbexa Ltd, Innovation Centre, Cambridge Science Park, Cambridge, CB4 0EY, UK  
Telephone: +44 (0) 1223 755950 - Fax: +44 (0) 1223 755951 - E-Mail: info@abbexa.com

## Human Matrix Metalloproteinase 24 (MMP24) Protein

Catalogue No.: abx067964



SDS-PAGE analysis of Human MMP24 Protein.

Recombinant Matrix Metalloproteinase 24 (MMP24) is a recombinant protein from Human. It is produced in E.coli using Prokaryotic expression.

<b>Target:</b>	Matrix Metalloproteinase 24 (MMP24)
<b>Origin:</b>	Human
<b>Host:</b>	E. coli
<b>Tested Applications:</b>	WB, SDS-PAGE
<b>Purity:</b>	> 92%
<b>Form:</b>	Lyophilized
<b>Reconstitution:</b>	Reconstitute in 20 mM Tris, 150 mM NaCl (pH 8.0) to a concentration of 0.1 - 1.0 mg/mL. Do not vortex.
<b>Conjugation:</b>	Unconjugated
<b>Storage:</b>	Store at 2-8 °C for up to one month. Store at -80 °C for up to one year. Avoid repeated freeze/thaw cycles.
<b>Expression:</b>	Recombinant
<b>Molecular Weight:</b>	28.7 kDa (Predicted Molecular Mass), 29 kDa (Accurate Molecular Mass as determined by SDS-PAGE)
<b>Swiss Prot:</b>	<a href="#">Q9Y5R2</a>
<b>Sequence Fragment:</b>	Ile429-Gln642

Abbexa Ltd, Innovation Centre, Cambridge Science Park, Cambridge, CB4 0EY, UK  
Telephone: +44 (0) 1223 755950 - Fax: +44 (0) 1223 755951 - E-Mail: info@abbexa.com

**Sequence:** MGSSHHHHH SSGLVPRGSH MASMTGGQQM GRGSEF- ID AAYERADGRF VFFKGDKYWV  
FKEVTVEPGY PHSLGELGSC LPREGIDTAL RWEVVGKTYF FKGERYWRYS EERRATDPGY  
PKPITVWKG I PQAPQGAFIS KEGYYTYFYK GRDYWKFDNQ KLSVEPGYPR NILRDWMGCN  
QKEVERRKER RLPQDDVDIM VTINDVPGSV NAVAVVPCI LSLCILVLVY TIFQFNKKTG  
PQPVTYYKRP VQ

**Tag:** Two N-terminal tags, His-tag and T7-tag

**Activity:** Not tested

**Concentration:** Prior to lyophilization: 200 µg/ml

**Buffer:** Prior to lyophilization: 20 mM Tris, 150 mM NaCl, pH 8.0, containing 1 mM EDTA, 1 mM DTT, 0.01% Sarcosyl, 5% Trehalose and Proclin-300.

**Note:** This product is for research use only.