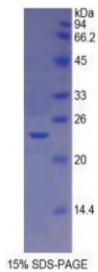


Dog Major Histocompatibility Complex Class II DR Alpha (MHCDRa) Protein

Catalogue No.: abx067918



SDS-PAGE analysis of Dog MHCDRa Protein.

Recombinant Major Histocompatibility Complex Class II DR Alpha (MHCDRa) is a recombinant protein from Dog. It is produced in E.coli using Prokaryotic expression.

Target: Major Histocompatibility Complex Class II DR Alpha (MHCDRa)

Origin: Dog

Host: E. coli

Tested Applications: ELISA, WB, IP, SDS-PAGE

Purity: > 95%

Form: Lyophilized

Conjugation: Unconjugated

Storage: Store at 2-8 °C for up to one month. Store at -80 °C for up to one year. Avoid repeated freeze/thaw cycles.

Expression: Recombinant

Molecular Weight: 23.5 kDa

NCBI Accession: NM_001011723.1

Sequence Fragment: Ala25-Glu216

Sequence: MGHHHHHHSG SEF-AVKEEH VIIQAEFYLT PDPSGEFMFD FDGDEIFHVD MEKKETVWRL
EEFGRFASFE AQGALANIAV DKANLDTMIK RSNHTPNTNV PPEVTVLSNT PVELGEPNIL
ICFIDKFSPP VINVTWLRNG NPVTGTVSET IFLPREDHLF RKFHYLPFLP SAEDVYDCKV
EHWGLDEPLL KHWEFEPPTP LPETTE

Abbexa Ltd, Innovation Centre, Cambridge Science Park, Cambridge, CB4 0EY, UK
Telephone: +44 (0) 1223 755950 - Fax: +44 (0) 1223 755951 - E-Mail: info@abbexa.com

Tag: N-terminal His-tag

Activity: Not tested

Concentration: Prior to lyophilization: 200 µg/ml

Buffer: Prior to lyophilization: PBS, pH 7.4, containing 0.01% Sarcosyl, 1 mM DTT, 5% Trehalose and Proclin-300.

Note: This product is for research use only.