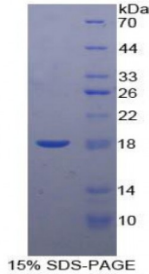


Horse Leptin (LEP) Protein

Catalogue No.: abx067743



SDS-PAGE analysis of Horse Leptin Protein.

Recombinant Leptin (LEP) is a recombinant protein from Horse. It is produced in E.coli using Prokaryotic expression.

Target: Leptin (LEP)

Origin: Horse

Host: E. coli

Tested Applications: ELISA, WB, IP, SDS-PAGE

Purity: > 95%

Form: Lyophilized

Conjugation: Unconjugated

Storage: Store at 2-8 °C for up to one month. Store at -80 °C for up to one year. Avoid repeated freeze/thaw cycles.

Expression: Recombinant

Molecular Weight: 17.7 kDa

Swiss Prot: [Q9TU09](#)

Sequence Fragment: Ile15-Ala141

Sequence: MGSSHHHHHH SGLVPRGSH MASMTGGQQM GRGSEF- IRKVQD DTKTLIKTIV TRINDISHTQ
SVSSKQRVTG LDFIPGLHPV LSLSKMDQTL AIYQQILTSL PSRNVIQISN DLENLRDLLH
LLASSKSCPL PQARGLETLA SLGGVLEASL LLHRGGSP EQ A

Tag: Two N-terminal tags, His-tag and T7-tag

Abbexa Ltd, Innovation Centre, Cambridge Science Park, Cambridge, CB4 0EY, UK
Telephone: +44 (0) 1223 755950 - Fax: +44 (0) 1223 755951 - E-Mail: info@abbexa.com

Activity: Not tested

Concentration: Prior to lyophilization: 200 µg/ml

Buffer: Prior to lyophilization: PBS, pH 7.4, containing 0.01% Sarcosyl, 1 mM DTT, 5% Trehalose and Proclin-300.

Note: This product is for research use only.