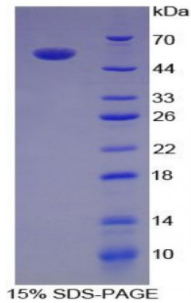


Abbexa Ltd, Innovation Centre, Cambridge Science Park, Cambridge, CB4 0EY, UK
Telephone: +44 (0) 1223 755950 - Fax: +44 (0) 1223 755951 - E-Mail: info@abbexa.com

Human Interleukin 35 (IL35) Protein

Catalogue No.: abx067529



SDS-PAGE analysis of Human Interleukin 35 Protein.

Recombinant Interleukin 35 (IL35) is a recombinant protein from Human. It is produced in E.coli using Prokaryotic expression.

Target: Interleukin 35 (IL35)

Origin: Human

Host: E. coli

Tested Applications: ELISA, WB, IP, SDS-PAGE

Purity: > 95%

Form: Lyophilized

Conjugation: Unconjugated

Storage: Store at 2-8 °C for up to one month. Store at -80 °C for up to one year. Avoid repeated freeze/thaw cycles.

Expression: Recombinant

Molecular Weight: 49 kDa

Sequence Fragment: The IL35 complex composed of IL27B subunit (Arg21-Lys229) and the mature form of human IL12A (Arg23-Ser219) linked by a polypeptide linker (GGGGS).

Sequence:
 MGHHHHHHSG SEFELRRQ- RKGPPAALTL PRVQCRASRY PIAVDCSWTL PPAPNSTSPV
 SFIATYRLGM AARGHSWPCL QQTPTSTSTCT ITDVQLFSMA PYVLNVTAVH PWGSSSSFVP
 FITEHIIKPD PPEGVRLSPL AERQLQVQWE PPGSWPFPEI FSLKYWIRYK RQGAARFHRV
 GPIEATSFIL RAVRPRARYY VQVAAQDLTD YGELSDWSLP ATATMSLGKS GGGGSGGGGS
 GGGGSRNLPV ATPDPGMFPC LHHSQNLLRA VSNMLQKARQ TLEFYPTCTSE EIDHEDITKD
 KTSTVEACLP LELTKNESCL NSRETSFITN GSCLASRKTS FMMALCLSSI YEDLKMYQVE
 FKTMNAKLLM DPKRQIFLDQ NMLAVIDELM QALNFNSETV POKSSLEEPD FYKTKIKLCI
 LLHAFRIRAV TIDRVTSYLN AS

Abbexa Ltd, Innovation Centre, Cambridge Science Park, Cambridge, CB4 0EY, UK
Telephone: +44 (0) 1223 755950 - Fax: +44 (0) 1223 755951 - E-Mail: info@abbexa.com

Tag: N-terminal His-tag

Activity: Not tested

Concentration: Prior to lyophilization: 200 µg/ml

Buffer: Prior to lyophilization: PBS, pH 7.4, containing 0.01% Sarcosyl, 1 mM DTT, 5% Trehalose and Proclin-300.

Note: This product is for research use only.