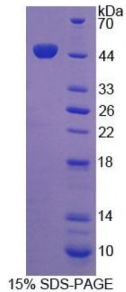


**Human Integrin Beta 1 (ITGb1) Protein**

Catalogue No.: abx067288



SDS-PAGE analysis of Human Integrin beta 1 Protein.

Recombinant Integrin Beta 1 (ITGb1) is a recombinant protein from Human. It is produced in E.coli using Prokaryotic expression.

**Target:** Integrin Beta 1 (ITGb1)**Origin:** Human**Host:** E. coli**Tested Applications:** ELISA, WB, IP, SDS-PAGE**Purity:** > 95%**Form:** Lyophilized**Conjugation:** Unconjugated**Storage:** Store at 2-8 °C for up to one month. Store at -80 °C for up to one year. Avoid repeated freeze/thaw cycles.**Expression:** Recombinant**Molecular Weight:** 45.3 kDa**Swiss Prot:** [P05556](#)**Sequence Fragment:** Gln467-Thr635

Abbexa Ltd, Innovation Centre, Cambridge Science Park, Cambridge, CB4 0EY, UK  
Telephone: +44 (0) 1223 755950 - Fax: +44 (0) 1223 755951 - E-Mail: info@abbexa.com

**Sequence:** MRNKKFEL GLEFPNLPYY IDGDVKLTQS MAIRYIADK HNMLGGCPKE RAEISMLEGA  
VLDIRYGVSR IAYSKDFETL KVDFLSKLPE MLKMFEDRLC HKTYLNGDHV THPDFMLYDA  
LDVVLYMDPM CLDAFPKLCV FKKRIEAIQ IDKYLKSSKY IAWPLQGWQA TFGGGDHPPK  
SDGSTSGSGH HHHHHSAGLV PRGSTAIGMK ETAAAKFERQ HMDSPDLGTL EVLFQGPLGS EF-  
QSEG IPESPKCHEG NGTFECGACR CNEGRVGRHC ECSTDEVNSE DMDAYCRKEN SSEICSNNGE  
CVCGQCVCRK RDNTNEIYSG KFCECDNFNC DRSNGLICGG NGVCKCRVCE CNPNYTGSA  
DCSLDTSTCE ASNGQICNGR GICECGVCKC TDPKFQGQTC EMCQT

**Tag:** Two N-terminal tags, His-tag and GST-tag

**Activity:** Not tested

**Concentration:** Prior to lyophilization: 200 µg/ml

**Buffer:** Prior to lyophilization: PBS, pH 7.4, containing 0.01% Sarcosyl, 1 mM DTT, 5% Trehalose and Proclin-300.

**Note:** This product is for research use only.