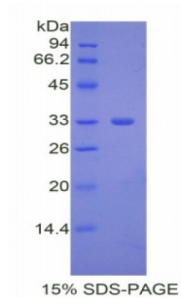


Mouse Insulin Receptor (ISR) Protein

Catalogue No.: abx067267



SDS-PAGE analysis of Mouse Insulin Receptor (INSR) Protein.

Recombinant Insulin Receptor (INSR) (ISR) is a recombinant protein from Mouse. It is produced in E.coli using Prokaryotic expression.

Target: Insulin Receptor (ISR)

Origin: Mouse

Host: E. coli

Tested Applications: ELISA, WB, IP, SDS-PAGE

Purity: > 95%

Form: Lyophilized

Conjugation: Unconjugated

Storage: Store at 2-8 °C for up to one month. Store at -80 °C for up to one year. Avoid repeated freeze/thaw cycles.

Expression: Recombinant

Molecular Weight: 32.6 kDa

Swiss Prot: [P15208](#)

Sequence Fragment: Leu1101-Ser1372

Sequence: MGHSHHHHSGSEF-LKSHLRSLRP DAENNPGRPP PTLQEMIQMT AEIADGMAYL NAKKFVHRDL
AARNCMVAHD FTVKIGDFGM TRDIYETDYY RKGKGLLPV RWMSPELKD GVFTASSDMW
SFGVVLWEIT SLAEQPYQGL SNEQVLKFVM DGGYLDPPDN CPERLTLMR MCWQFNPKMR
PTFLEIVNLL KDDLHPSFPE VSFFYSEENK APESELEME FEDMENVPLD RSSHCQREEA
GGREGSSLS IKRKYDEHIP YTHMNGGKKN GRVLTLPKSN PS

Abbexa Ltd, Innovation Centre, Cambridge Science Park, Cambridge, CB4 0EY, UK
Telephone: +44 (0) 1223 755950 - Fax: +44 (0) 1223 755951 - E-Mail: info@abbexa.com

Tag: N-terminal His-tag

Activity: Not tested

Concentration: Prior to lyophilization: 200 µg/ml

Buffer: Prior to lyophilization: PBS, pH 7.4, containing 0.01% Sarcosyl, 1 mM DTT, 5% Trehalose and Proclin-300.

Note: This product is for research use only.