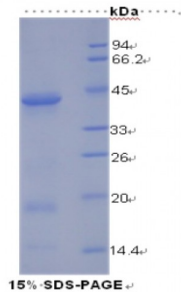


Abbexa Ltd, Innovation Centre, Cambridge Science Park, Cambridge, CB4 0EY, UK  
Telephone: +44 (0) 1223 755950 - Fax: +44 (0) 1223 755951 - E-Mail: info@abbexa.com

## Human Insulin Receptor (ISR) Protein

Catalogue No.: abx067266



SDS-PAGE analysis of Human Insulin Receptor (INSR) Protein.

Recombinant Insulin Receptor (INSR) (ISR) is a recombinant protein from Human. It is produced in E.coli using Prokaryotic expression.

**Target:** Insulin Receptor (ISR)

**Origin:** Human

**Host:** E. coli

**Tested Applications:** ELISA, WB, IP, SDS-PAGE

**Purity:** > 95%

**Form:** Lyophilized

**Conjugation:** Unconjugated

**Storage:** Store at 2-8 °C for up to one month. Store at -80 °C for up to one year. Avoid repeated freeze/thaw cycles.

**Expression:** Recombinant

**Molecular Weight:** 38 kDa

**Swiss Prot:** [P06213](#)

**Sequence Fragment:** Pro622-Thr945

Abbexa Ltd, Innovation Centre, Cambridge Science Park, Cambridge, CB4 0EY, UK  
Telephone: +44 (0) 1223 755950 - Fax: +44 (0) 1223 755951 - E-Mail: info@abbexa.com

**Sequence:** MGHHHHHHSGSEF-PSVPLDPIS VSNSSSQIIL KWKPPSDPNG NITHYLVFWE RQAEDSELF  
LDYCLKGLKL PSRTWSPFFE SEDSQKHNQS EYEDSAGECC SCPKTDSQIL KELEESSFRK  
TFEDYLHNVV FVPRKTSSGT GAEDPRPSRK RRSLGDVGNV TVAVPTVAAF PNTSSTSVPT  
SPEHRPF EK VVNKESLVIS GLRHFTGYRI ELQACNQDTP EERCSVAAYV SARTMPEAKA  
DDIVGPVTHE IFENNVVHLM WQEPKEPNGL IVLYEVSYRR YGDEELHLCV SRKHFALERG  
CRLRGLSPGN YSVRIRATSL AGNGSWTEPT YFYVT

**Tag:** N-terminal His-tag

**Activity:** Not tested

**Concentration:** Prior to lyophilization: 200 µg/ml

**Buffer:** Prior to lyophilization: PBS, pH 7.4, containing 0.01% Sarcosyl, 1 mM DTT, 5% Trehalose and Proclin-300.

**Note:** This product is for research use only.