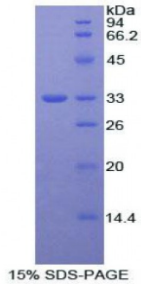


Abbexa Ltd, Innovation Centre, Cambridge Science Park, Cambridge, CB4 0EY, UK
Telephone: +44 (0) 1223 755950 - Fax: +44 (0) 1223 755951 - E-Mail: info@abbexa.com

Rat Insulin Receptor (ISR) Protein

Catalogue No.: abx067264



SDS-PAGE analysis of Rat Insulin Receptor (INSR) Protein.

Recombinant Insulin Receptor (INSR) (ISR) is a recombinant protein from Rat. It is produced in E.coli using Prokaryotic expression.

Target: Insulin Receptor (ISR)

Origin: Rat

Host: E. coli

Tested Applications: ELISA, WB, IP, SDS-PAGE

Purity: > 95%

Form: Lyophilized

Conjugation: Unconjugated

Storage: Store at 2-8 °C for up to one month. Store at -80 °C for up to one year. Avoid repeated freeze/thaw cycles.

Expression: Recombinant

Molecular Weight: 32.3 kDa

Swiss Prot: [P15127](#)

Sequence Fragment: Ser1114-Pro1382

Sequence: MGHSHHHHSGSEF-SHLRSLR PDAENNPGRP PPTLQEMIQM TAEIADGMAY LNAKKFVHRD
LAARNCMVAH DFTVKIGDFG MTRDIYETDY YRKGKGLLP VRWMSPELKD DGVFTASSDM
WSFGVVLWEI TSLAEQPYQG LSNEQVLKVF MDGGYLDPPD NCPERLTDLM RMCWQFNPKM
RPTFLEIVNL LKDDLHPSFP EVSFFYSEEN KAPESEELEM EFEDMENVPL DRSSHQREE
AGCREGGSSL SIKRQYDEHI PYTHMNGGKK NGRVLTLP RS NP

Abbexa Ltd, Innovation Centre, Cambridge Science Park, Cambridge, CB4 0EY, UK
Telephone: +44 (0) 1223 755950 - Fax: +44 (0) 1223 755951 - E-Mail: info@abbexa.com

Tag: N-terminal His-tag

Activity: Not tested

Concentration: Prior to lyophilization: 200 µg/ml

Buffer: Prior to lyophilization: PBS, pH 7.4, containing 0.01% Sarcosyl, 1 mM DTT, 5% Trehalose and Proclin-300.

Note: This product is for research use only.