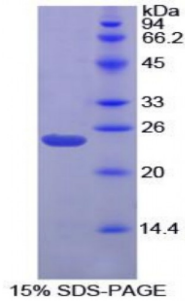


Chicken Gremlin 1 (GREM1) Protein

Catalogue No.: abx066924



SDS-PAGE analysis of Chicken Gremlin 1 Protein.

Recombinant Gremlin 1 (GREM1) is a recombinant protein from Chicken. It is produced in E.coli using Prokaryotic expression.

Target: Gremlin 1 (GREM1)

Origin: Chicken

Host: E. coli

Tested Applications: ELISA, WB, IP, SDS-PAGE

Purity: > 95%

Form: Lyophilized

Conjugation: Unconjugated

Storage: Store at 2-8 °C for up to one month. Store at -80 °C for up to one year. Avoid repeated freeze/thaw cycles.

Expression: Recombinant

Molecular Weight: 24.1 kDa

Swiss Prot: [O73755](#)

Sequence Fragment: Arg27-Asp184

Sequence: MHHHHHHSSG LVPRGSGMKE TAAAKFERQH MDSPDLGTDD DDKAMADIGS EF- RNRG
SQGAIPPPDK DQPNDSEMQM TQQQSGSRHR ERGKGTSMPA EEVLESSQEA LHITERKYLK
RDWCKTQPLK QTIHEEGCNS RTIINRFCYG QCNSFYIPRH VRKEEGSFQS CSFCKPKKFT
TMTVTLNCPE LQPPRKKKRI TRVKECRCIS IDLD

Tag: Two N-terminal tags, His-tag and S-tag

Abbexa Ltd, Innovation Centre, Cambridge Science Park, Cambridge, CB4 0EY, UK
Telephone: +44 (0) 1223 755950 - Fax: +44 (0) 1223 755951 - E-Mail: info@abbexa.com

Activity: Not tested

Concentration: Prior to lyophilization: 200 µg/ml

Buffer: Prior to lyophilization: PBS, pH 7.4, containing 0.01% Sarcosyl, 1 mM DTT, 5% Trehalose and Proclin-300.

Note: This product is for research use only.