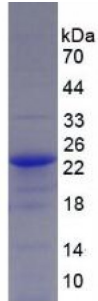


Human Glucose Transporter 1 Protein

Catalogue No.: abx066796



SDS-PAGE analysis of Human Glucose Transporter 1 Protein.

Recombinant Glucose Transporter 1 (GLUT1) is a recombinant protein from Human. It is produced in E.coli using Prokaryotic expression.

Target: Glucose Transporter 1 (GLUT1)**Origin:** Human**Host:** E. coli**Tested Applications:** ELISA, WB, IP, SDS-PAGE**Purity:** > 95%**Form:** Lyophilized**Conjugation:** Unconjugated**Storage:** Store at 2-8 °C for up to one month. Store at -80 °C for up to one year. Avoid repeated freeze/thaw cycles.**Expression:** Recombinant**Molecular Weight:** 10.3 kDa**Swiss Prot:** [P11166](#)**Sequence Fragment:** Met251-Glu329**Sequence:** MGHHHHHHSGSEF-MMREKKVTIL ELFRSPAYRQ PILIAVVLQL SSQLSGINAV FYYSTSIFEK
AGVQQPVYAT IGSGIVNTAF TVVSLFVVE**Tag:** N-terminal His-tag

Abbexa Ltd, Innovation Centre, Cambridge Science Park, Cambridge, CB4 0EY, UK
Telephone: +44 (0) 1223 755950 - Fax: +44 (0) 1223 755951 - E-Mail: info@abbexa.com

Activity: Not tested

Concentration: Prior to lyophilization: 200 µg/ml

Buffer: Prior to lyophilization: 20 mM Tris, 150 mM NaCl, pH 8.0, containing 1 mM EDTA, 1 mM DTT, 0.01% Sarcosyl, 5% Trehalose and Proclin-300.

Note: This product is for research use only.