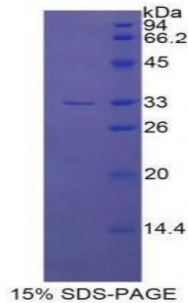


Human Endothelin Converting Enzyme 1 (ECE1) Protein

Catalogue No.: abx066416



SDS-PAGE analysis of Human ECE1 Protein.

Recombinant Endothelin Converting Enzyme 1 (ECE1) is a recombinant protein from Human. It is produced in E.coli using Prokaryotic expression.

Target: Endothelin Converting Enzyme 1 (ECE1)

Origin: Human

Host: E. coli

Tested Applications: ELISA, WB, IP, SDS-PAGE

Purity: > 95%

Form: Lyophilized

Conjugation: Unconjugated

Storage: Store at 2-8 °C for up to one month. Store at -80 °C for up to one year. Avoid repeated freeze/thaw cycles.

Expression: Recombinant

Molecular Weight: 32.8 kDa

Swiss Prot: [P42892](#)

Sequence Fragment: Leu469-Glu721

Sequence: MGSSHHHHHH SGLVPRGSH MASMTGGQQM GRGSEF-LE IKKAFEESLS TLKWMDEETR
KSAKEKADAI YNMIGYPNFI MDPKELDKVF NDYTAVPDLY FENAMRFFNF SWRVTADQLR
KAPNRDQWSM TPPMVNAYYS PTKNEIVFPA GILQAPFYTR SSPKALNFGG IGVVVGHELT
HAFDDQGREY DKDGNLRPWW KNSSVEAFKR QTECMVEQYS NYSVNGEPVN GRHTLGENIA
DNGGLKAAYR AYQNWWKKNNG AEHSLPTLGL TNNQLFFLGF AQVWCSVRTP E

Abbexa Ltd, Innovation Centre, Cambridge Science Park, Cambridge, CB4 0EY, UK
Telephone: +44 (0) 1223 755950 - Fax: +44 (0) 1223 755951 - E-Mail: info@abbexa.com

Tag: Two N-terminal tags, His-tag and T7-tag

Activity: Not tested

Concentration: Prior to lyophilization: 200 µg/ml

Buffer: Prior to lyophilization: PBS, pH 7.4, containing 0.01% Sarcosyl, 1 mM DTT, 5% Trehalose and Proclin-300.

Note: This product is for research use only.