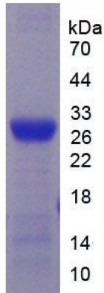


Abbexa Ltd, Innovation Centre, Cambridge Science Park, Cambridge, CB4 0EY, UK
Telephone: +44 (0) 1223 755950 - Fax: +44 (0) 1223 755951 - E-Mail: info@abbexa.com

Mouse Cytochrome P450 2E1 (CYP2E1) Protein

Catalogue No.: abx066265



SDS-PAGE analysis of Mouse CYP2E1 Protein.

Recombinant CYP2E1 is a recombinant protein from Mouse. It is produced in E.coli using Prokaryotic expression.

Target: Cytochrome P450 2E1 (CYP2E1)

Origin: Mouse

Host: E. coli

Tested Applications: ELISA, WB, IP, SDS-PAGE

Purity: > 95%

Form: Lyophilized

Conjugation: Unconjugated

Storage: Store at 2-8 °C for up to one month. Store at -80 °C for up to one year. Avoid repeated freeze/thaw cycles.

Expression: Recombinant

Molecular Weight: 29.4 kDa

Swiss Prot: [Q05421](#)

Gene Symbol: CYP2E1

Sequence Fragment: Pro34-Met273

Abbexa Ltd, Innovation Centre, Cambridge Science Park, Cambridge, CB4 0EY, UK
Telephone: +44 (0) 1223 755950 - Fax: +44 (0) 1223 755951 - E-Mail: info@abbexa.com

Sequence: MGHHHHHHSGSEF-PGPFPIP FFGNIFQLDL KDIPKSLTKL AKRFGPVFTL HLGQRRIVVL
HGKAVKEVL LNHKNEFSGR GDIPVFQEYK NKGIFNNGP TWKDVRRFSL SILRDWGMGK
QGNEARIQRE AHFLVEELKK TKGQPFDPF LIGCAPCNVI ADILFNKRFD YDDKKCLELM
SLFNENFYLL STPWIQAYNY FSDYLQYLPG SHRKVMKNVS EIRQYTLGKA KEHLKSLDIN
CPRDVTDCLL IEM

Tag: N-terminal His-tag

Activity: Not tested

Concentration: Prior to lyophilization: 200 µg/ml

Buffer: Prior to lyophilization: 20 mM Tris, 150 mM NaCl, pH 8.0, containing 1 mM EDTA, 1 mM DTT, 0.01% Sarcosyl, 5% Trehalose and Proclin-300.

Note: This product is for research use only.