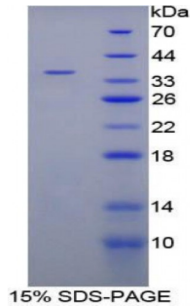


Abbexa Ltd, Innovation Centre, Cambridge Science Park, Cambridge, CB4 0EY, UK
Telephone: +44 (0) 1223 755950 - Fax: +44 (0) 1223 755951 - E-Mail: info@abbexa.com

Human Cytochrome P450 21B (CYP21B) Protein

Catalogue No.: abx066256



SDS-PAGE analysis of Human Cytochrome P450 21B Protein.

Recombinant Cytochrome P450 21B (CYP21B) is a recombinant protein from Human. It is produced in E.coli using Prokaryotic expression.

Target: Cytochrome P450 21B (CYP21B)

Origin: Human

Host: E. coli

Tested Applications: ELISA, WB, IP, SDS-PAGE

Purity: > 95%

Form: Lyophilized

Conjugation: Unconjugated

Storage: Store at 2-8 °C for up to one month. Store at -80 °C for up to one year. Avoid repeated freeze/thaw cycles.

Expression: Recombinant

Molecular Weight: 35.8 kDa

Swiss Prot: [P08686](#)

Sequence Fragment: Asp106-Gln389

Abbexa Ltd, Innovation Centre, Cambridge Science Park, Cambridge, CB4 0EY, UK
Telephone: +44 (0) 1223 755950 - Fax: +44 (0) 1223 755951 - E-Mail: info@abbexa.com

- Sequence:** MGSSHHHHH SSGLVPRGSH MASMTGGQQM GRGS- DLSLG DYSLLWKAHK KLTRSALLG
IRDSMEPVVE QLTQEFCEM RAQPGTPVAI EEEFSLLTCS IICYLTFGDK IKDDNLMPAY
YKCIQEV LKT WSHWSIQIVD VIPFLRFFPN PGLRRLKQAI EKRDHIVEMQ LRQHKE SLVA
GQWRDMMDYM LQGVAQPSME EGSGQLLEGH VHMAAVDLLI GGTETTANTL SWAVVFLHH
PEIQRLQEE LDHELPGAS SSRVPYKDRA RLPLLNATIA EVLRLRPVVP LALPHRTTRP
SSISGYDIPE GTVIIPNLQ
- Tag:** Two N-terminal tags, His-tag and T7-tag
- Activity:** Not tested
- Concentration:** Prior to lyophilization: 200 µg/ml
- Buffer:** Prior to lyophilization: 20 mM Tris, 150 mM NaCl, pH 8.0, containing 1 mM EDTA, 1 mM DTT, 0.01% Sarcosyl, 5% Trehalose and Proclin-300.
- Note:** This product is for research use only.