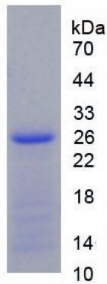


## Human Cystathionine Gamma Lyase (CSE) Protein

Catalogue No.: abx066229



SDS-PAGE analysis of Human CSE Protein.

Recombinant Cystathionine Gamma Lyase (CSE) is a recombinant protein from Human. It is produced in E.coli using Prokaryotic expression.

**Target:** Cystathionine Gamma Lyase (CSE)

**Origin:** Human

**Host:** E. coli

**Tested Applications:** ELISA, WB, IP, SDS-PAGE

**Purity:** > 95%

**Form:** Lyophilized

**Conjugation:** Unconjugated

**Storage:** Store at 2-8 °C for up to one month. Store at -80 °C for up to one year. Avoid repeated freeze/thaw cycles.

**Expression:** Recombinant

**Molecular Weight:** 28.3 kDa

**Swiss Prot:** [P32929](#)

**Sequence Fragment:** Thr163-Asp382

**Sequence:**  
 MGSSHHHHHH SGLVPRGSH MASMTGGQQM GRGSEF- TQKVIDIE GCAHIVHKHG DIILVVDNTF  
 MSPYFQRPLA LGADISMYSY TKYMNGHSDV VMGLVSVNCE SLHNRLRFLQ NSLGAVPSPY  
 DCYLCNRGLK TLHVRMEKHF KNGMAVAQFL ESNPWVEKVI YPGLPSPHQH ELVKRQCTGC  
 TGMVTFYIKG TLQHAEIFLK NLKLFTLAES LGGFESLAEL PAIMTHASVL KNDRDVLGIS  
 DTLIRLSVGL ED

Abbexa Ltd, Innovation Centre, Cambridge Science Park, Cambridge, CB4 0EY, UK  
Telephone: +44 (0) 1223 755950 - Fax: +44 (0) 1223 755951 - E-Mail: info@abbexa.com

- Tag:** Two N-terminal tags, His-tag and T7-tag
- Activity:** Not tested
- Concentration:** Prior to lyophilization: 200 µg/ml
- Buffer:** Prior to lyophilization: 20 mM Tris, 150 mM NaCl, pH 8.0, containing 1 mM EDTA, 1 mM DTT, 0.01% Sarcosyl, 5% Trehalose and Proclin-300.
- Note:** This product is for research use only.