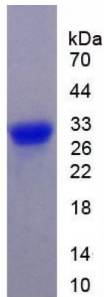


Abbexa Ltd, Innovation Centre, Cambridge Science Park, Cambridge, CB4 0EY, UK
Telephone: +44 (0) 1223 755950 - Fax: +44 (0) 1223 755951 - E-Mail: info@abbexa.com

Mouse Cyclin D1 (CCND1) Protein

Catalogue No.: abx066194



SDS-PAGE analysis of Mouse Cyclin D1 Protein.

Recombinant Cyclin D1 (CCND1) is a recombinant protein from Mouse. It is produced in E.coli using Prokaryotic expression.

Target: Cyclin D1 (CCND1)

Origin: Mouse

Host: E. coli

Tested Applications: ELISA, WB, IP, SDS-PAGE

Purity: > 95%

Form: Lyophilized

Conjugation: Unconjugated

Storage: Store at 2-8 °C for up to one month. Store at -80 °C for up to one year. Avoid repeated freeze/thaw cycles.

Expression: Recombinant

Molecular Weight: 29.1 kDa

Swiss Prot: [P25322](#)

Sequence Fragment: Met31-Ile295

Sequence: MGHHHHHHSGSEF-MLKTEETCAP SVSYFKCVQK EIVPSMRKIV ATWMLEVCEE QKCEEEVFPL
AMNYLDRFLS LEPLKKSRLQ LLGATCMFVA SKMKETIPLT AEKLCIYTDN SIRPEELLQM
ELLLVNKLKW NLAAMTPHDF IEHFLSKMPE ADENKQTIRK HAQTFVALCA TDVKFISNPP
SMVAAGSVVA AMQGLNLGSP NNFLSCYRTT HFLSRVIKCD PDCLRACQEQ IEALLESSLR
QAQQNVDPKA TEEEGEVEEEE AGLACTPTDV RDVDI

Abbexa Ltd, Innovation Centre, Cambridge Science Park, Cambridge, CB4 0EY, UK
Telephone: +44 (0) 1223 755950 - Fax: +44 (0) 1223 755951 - E-Mail: info@abbexa.com

Tag: N-terminal His-tag

Activity: Not tested

Concentration: Prior to lyophilization: 200 µg/ml

Buffer: Prior to lyophilization: 20 mM Tris, 150 mM NaCl, pH 8.0, containing 1 mM EDTA, 1 mM DTT, 0.01% Sarcosyl, 5% Trehalose and Proclin-300.

Note: This product is for research use only.