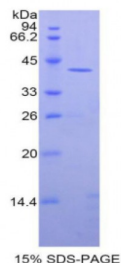


Abbexa Ltd, Innovation Centre, Cambridge Science Park, Cambridge, CB4 0EY, UK
Telephone: +44 (0) 1223 755950 - Fax: +44 (0) 1223 755951 - E-Mail: info@abbexa.com

Rat Creatine Kinase, Muscle (CKM) Protein

Catalogue No.: abx066150



SDS-PAGE analysis of Rat CKM Protein.

Recombinant Creatine Kinase, Muscle (CKM) is a recombinant protein from Rat. It is produced in E.coli using Prokaryotic expression.

Target: Creatine Kinase, Muscle (CKM)

Origin: Rat

Host: E. coli

Tested Applications: ELISA, WB, IP, SDS-PAGE

Purity: > 95%

Form: Lyophilized

Conjugation: Unconjugated

Storage: Store at 2-8 °C for up to one month. Store at -80 °C for up to one year. Avoid repeated freeze/thaw cycles.

Expression: Recombinant

Molecular Weight: 41.8 kDa

Swiss Prot: [P00564](#)

Sequence Fragment: Lys11-Leu367

Abbexa Ltd, Innovation Centre, Cambridge Science Park, Cambridge, CB4 0EY, UK
Telephone: +44 (0) 1223 755950 - Fax: +44 (0) 1223 755951 - E-Mail: info@abbexa.com

Sequence: MGHHHHHSGSEF-KLNYKPQEY PDLKHNHNM AKVLTPDLYN KLRDKETPSG FTLDDVIQTG
VDNPGHPFIM TVGCVAGDEE SYTVFKDLFD PIIQDRHGGY KPTDKHKTDL NHENLKGDD
LDPNYVLSSR VRTGRSIKGY TLPPHCSRGE RRAVEKLSVE ALNSLTGEFK GKYYPLKSMT
EQEQQLIDD HFLFDKPVSP LLLASGMARD WPDARGIWHN DNKSFLVWVN EEDHLRVISM
EKGGNMKEVF RRFCVGLQKI EEIFKAGHP FMWNEHLGYV LTCPSNLGTG LRGGVHVKLA
NLSKHPKFEE ILTRLRLQKR GTGGVDAAV GAVFDISNAD RLGSEVEQV QLVVDGVKLM
VEMEKKL

Tag: N-terminal His-tag

Activity: Not tested

Concentration: Prior to lyophilization: 200 µg/ml

Buffer: Prior to lyophilization: PBS, pH 7.4, containing 0.01% Sarcosyl, 1 mM DTT, 5% Trehalose and Proclin-300.

Note: This product is for research use only.