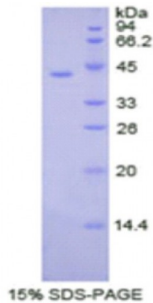


Abbexa Ltd, Innovation Centre, Cambridge Science Park, Cambridge, CB4 0EY, UK
Telephone: +44 (0) 1223 755950 - Fax: +44 (0) 1223 755951 - E-Mail: info@abbexa.com

Human Creatine Kinase, Brain (CKB) Protein

Catalogue No.: abx066143



SDS-PAGE analysis of Human Creatine Kinase, Brain Protein.

Recombinant Creatine Kinase, Brain (CKB) is a recombinant protein from Human. It is produced in E.coli using Prokaryotic expression.

Target: Creatine Kinase, Brain (CKB)

Origin: Human

Host: E. coli

Tested Applications: ELISA, WB, IP, SDS-PAGE

Purity: > 95%

Form: Lyophilized

Conjugation: Unconjugated

Storage: Store at 2-8 °C for up to one month. Store at -80 °C for up to one year. Avoid repeated freeze/thaw cycles.

Expression: Recombinant

Molecular Weight: 41.5 kDa

Swiss Prot: [P12277](#)

Sequence Fragment: Lys11-Leu367

Abbexa Ltd, Innovation Centre, Cambridge Science Park, Cambridge, CB4 0EY, UK
Telephone: +44 (0) 1223 755950 - Fax: +44 (0) 1223 755951 - E-Mail: info@abbexa.com

Sequence: MGHHHHHHSGSEF-KLRFPAEDEF PLSAHNNHM AKVLTPELYA ELRAKSTPSG FTLDDVIQTG
VDNPGHPYIM TVGCVAGDEE SYEVFKDLFD PIEDRHGGY KPSDEHKTDL
NPDNLQGGDDLDPNYVLSSR VRTGRSIRGF CLPPHCSRGE RRAIEKLAVE ALSSLDGDLA
GRYYALKSMT EAEQQQLIDD HFLFDKPVSP LLLASGMARD WPDARGIWHN DNKTFVWVN
EEDHLRVISM QKGGNMKEVF TRFCTGLTQI ETLFKSKDYE FMWNPFLGYI LTCPSNLGTG
LRAGVHIKLP NLGKHEKFSE VLKRLRLQKR GTGGVDAAV GGVFDVSNAD RLGFESEVELV
QMVVDGVKLL IEMEQRL

Tag: N-terminal His-tag

Activity: Not tested

Concentration: Prior to lyophilization: 200 µg/ml

Buffer: Prior to lyophilization: PBS, pH 7.4, containing 0.01% Sarcosyl, 1 mM DTT, 5% Trehalose and Proclin-300.

Note: This product is for research use only.