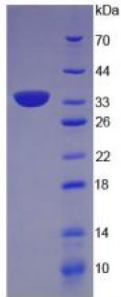


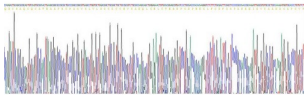
Abbexa Ltd, Innovation Centre, Cambridge Science Park, Cambridge, CB4 0EY, UK
Telephone: +44 (0) 1223 755950 - Fax: +44 (0) 1223 755951 - E-Mail: info@abbexa.com

Rat Connective Tissue Growth Factor (CTGF) Protein

Catalogue No.: abx066094



SDS-PAGE analysis of recombinant Rat CTGF Protein.



Gene sequencing extract of Rat CTGF.

Connective Tissue Growth Factor (CTGF) is a protein from Rat. It is produced in E.coli using Prokaryotic expression.

Target: Connective Tissue Growth Factor (CTGF)

Origin: Rat

Host: E. coli

Tested Applications: WB, SDS-PAGE

Purity: > 95%

Form: Lyophilized

Reconstitution: Reconstitute in PBS, pH 7.4, to a concentration of 0.1-1.0 mg/ml. Do not vortex.

Conjugation: Unconjugated

Storage: Store at 2-8 °C for up to one month. Store at -80 °C for up to one year. Avoid repeated freeze/thaw cycles.

Expression: Recombinant

Molecular Weight: Calculated MW: 36.7 kDa
Observed MW (SDS-PAGE): 35 kDa

Abbexa Ltd, Innovation Centre, Cambridge Science Park, Cambridge, CB4 0EY, UK
Telephone: +44 (0) 1223 755950 - Fax: +44 (0) 1223 755951 - E-Mail: info@abbexa.com

Swiss Prot: [Q9R1E9](#)

Sequence Fragment: Gln25-Ala348

Sequence: QDCSAQ CQCAAEAAPR CPAGVSLVLD GCGCCRCAK QLGELECTERD PCDPHKGLFC
DFGSPANRKI GVCTAKDGAP CVFGGSVYRS GESFQSSCKY QCTCLDGAVG CVPLCSMDVR
LPSPDCPFPR RVKLPKGCCE EWVCDEPKDR TVVGPALAAAYRLEDTFGPDP TMMRANCLVQ
TTEWSACSKT CGMGISTRVT NDNTFCRLEK QSRLCMVRPC EADLEENIKK GKKCIRTPKI
AKPVKFELSG CTSVKTYRAK FCGVCTDGRC CTPHRTTTL PVEFKCPDGEI MKKNMMFIKT
CACHYNCPGD NDIFESLYR KMYGDMA

Tag: N-terminal His-tag

Activity: Not tested

Concentration: Prior to lyophilization: 200 µg/ml

Buffer: Prior to lyophilization: PBS, pH 7.4, containing 0.01% Sarcosyl, 5% Trehalose and Proclin-300.

Note: This product is for research use only.