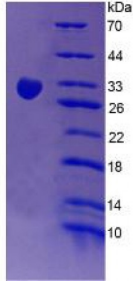


Human Complement Receptor 1, Erythrocyte (CR1) Protein

Catalogue No.: abx066084



SDS-PAGE analysis of Human CR1 Protein.

Recombinant Complement Receptor 1, Erythrocyte (CR1) is a recombinant protein from Human. It is produced in E.coli using Prokaryotic expression.

Target: Complement Receptor 1, Erythrocyte (CR1)

Origin: Human

Host: E. coli

Tested Applications: ELISA, WB, IP, SDS-PAGE

Purity: > 95%

Form: Lyophilized

Conjugation: Unconjugated

Storage: Store at 2-8 °C for up to one month. Store at -80 °C for up to one year. Avoid repeated freeze/thaw cycles.

Expression: Recombinant

Molecular Weight: 30.4 kDa

Swiss Prot: [P17927](#)

Sequence Fragment: Ile1780-Pro2039

Sequence: MGHHHHHHSGSEF- I LNGRHTGTPF GDIPYGKEIS YACDTHPDRG MTFNLIGESS IRCTSDPQGN
GWWSSPAPRC ELSVPAACPH PPKIQNGHYI GGHVSLYLPG MTISYICDPG YLLVGKGFIF
CTDQGIWSQL DHYCKEVNCS FPLFMNGISK ELEMKKVYHY GDYVTLKCED GYTLEGSPWS
QCQADDRWDP PLAKCTSRTH DALIVGTLSG TIFFILLIIF LSWIILKHRK GNNAHENPKE
VAIHLHSQGG SSVHPRTLQT NEENSRVLP

Abbexa Ltd, Innovation Centre, Cambridge Science Park, Cambridge, CB4 0EY, UK
Telephone: +44 (0) 1223 755950 - Fax: +44 (0) 1223 755951 - E-Mail: info@abbexa.com

Tag: N-terminal His-tag

Activity: Not tested

Concentration: Prior to lyophilization: 200 µg/ml

Buffer: Prior to lyophilization: 20 mM Tris, 150 mM NaCl, pH 8.0, containing 1 mM EDTA, 1 mM DTT, 0.01% Sarcosyl, 5% Trehalose and Proclin-300.

Note: This product is for research use only.