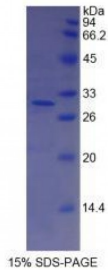


Human Complement Factor I (CFI) Protein

Catalogue No.: abx066080



SDS-PAGE analysis of Human Complement Factor I Protein.

Recombinant Complement Factor I (CFI) is a recombinant protein from Human. It is produced in E.coli using Prokaryotic expression.

Target: Complement Factor I (CFI)

Origin: Human

Host: E. coli

Tested Applications: ELISA, WB, IP, SDS-PAGE

Purity: > 95%

Form: Lyophilized

Conjugation: Unconjugated

Storage: Store at 2-8 °C for up to one month. Store at -80 °C for up to one year. Avoid repeated freeze/thaw cycles.

Expression: Recombinant

Molecular Weight: 29.1 kDa

Swiss Prot: [P05156](#)

Sequence Fragment: Ile340-Val583

Sequence: MGHHHHHHSG SEF-I VGGKRAQLGD LPWQVAIKDA SGITCGGIYI GGCWILTAH CLRASKTHRY
QIWTTVVDWI HPDLKRIVIE YVDRIIFHEN YNAGTYQNDI ALIEMKKDGN KKDCELPRESI
PACVPWSPYL FQPNDCIVS GWGREKDNER VFSLQWGEVK LISNCSKFYG NRFYEKEMEC
AGTYDGSIDA CKGDSGGPLV CMDANNVTYV WGVVSWGENC GKPEFPGVYT KVANYFDWIS
YHVGRPFISQ YNV

Abbexa Ltd, Innovation Centre, Cambridge Science Park, Cambridge, CB4 0EY, UK
Telephone: +44 (0) 1223 755950 - Fax: +44 (0) 1223 755951 - E-Mail: info@abbexa.com

Tag: N-terminal His-tag

Activity: Not tested

Concentration: Prior to lyophilization: 200 µg/ml

Buffer: Prior to lyophilization: PBS, pH 7.4, containing 0.01% Sarcosyl, 1 mM DTT, 5% Trehalose and Proclin-300.

Note: This product is for research use only.