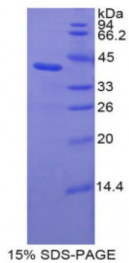


Abbexa Ltd, Innovation Centre, Cambridge Science Park, Cambridge, CB4 0EY, UK
Telephone: +44 (0) 1223 755950 - Fax: +44 (0) 1223 755951 - E-Mail: info@abbexa.com

Rat Complement Component 3a (C3a) Protein

Catalogue No.: abx066056



SDS-PAGE analysis of Rat C3a Protein.

Recombinant Complement Component 3a (C3a) is a recombinant protein from Rat. It is produced in E.coli using Prokaryotic expression.

Target: Complement Component 3a (C3a)

Origin: Rat

Host: E. coli

Tested Applications: ELISA, WB, IP, SDS-PAGE

Purity: > 95%

Form: Lyophilized

Conjugation: Unconjugated

Storage: Store at 2-8 °C for up to one month. Store at -80 °C for up to one year. Avoid repeated freeze/thaw cycles.

Expression: Recombinant

Molecular Weight: 40.3 kDa

Swiss Prot: [P01026](#)

Sequence Fragment: Asp966-Trp1313

Abbexa Ltd, Innovation Centre, Cambridge Science Park, Cambridge, CB4 0EY, UK
Telephone: +44 (0) 1223 755950 - Fax: +44 (0) 1223 755951 - E-Mail: info@abbexa.com

Sequence: MGHHHHHSG S-DLSDQ VPDTDSETRI LLQGTPVAQM AEDAVIDGERL KHLIVTPSGC
GEQNMIGMTP TVIAVHYLDQ TEQWEKFGLE KRQEALELIK KGYTQQLAFK QPISAYA AFN
NRPPSTWLTA MWSRSFSLAA NLIAIDSQVL CGAVKWLILE KQKPDGVFQE DGPVIHQEMI
GGFRNTKEAD VSLTAFVLIA LQEARDICEG QVNSLPGSIN KAGEYLEASY LNLQRPYTVA
IAGYALALMN KLEEPLYLTKF LNTAKDRNRW EEPGQQLYNV EATSYALLAL LLLKDFDSVP
PVVRWLNDER YYGGGYGSTQ ATFMVFQALA QYRADVPDHL DLNMDVSLHL PSRSSPTVFR LLW

Tag: N-terminal His-tag

Activity: Not tested

Concentration: Prior to lyophilization: 200 µg/ml

Buffer: Prior to lyophilization: PBS, pH 7.4, containing 0.01% Sarcosyl, 1 mM DTT, 5% Trehalose and Proclin-300.

Note: This product is for research use only.