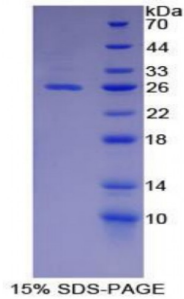


Abbexa Ltd, Innovation Centre, Cambridge Science Park, Cambridge, CB4 0EY, UK
Telephone: +44 (0) 1223 755950 - Fax: +44 (0) 1223 755951 - E-Mail: info@abbexa.com

Mouse Chordin (CHRD) Protein

Catalogue No.: abx065884



SDS-PAGE analysis of Mouse Chordin Protein.

Recombinant Chordin (CHRD) is a recombinant protein from Mouse. It is produced in E.coli using Prokaryotic expression.

Target: Chordin (CHRD)

Origin: Mouse

Host: E. coli

Tested Applications: ELISA, WB, IP, SDS-PAGE

Purity: > 95%

Form: Lyophilized

Conjugation: Unconjugated

Storage: Store at 2-8 °C for up to one month. Store at -80 °C for up to one year. Avoid repeated freeze/thaw cycles.

Expression: Recombinant

Molecular Weight: 26.3 kDa

Swiss Prot: [Q9Z0E2](#)

Sequence Fragment: Ser422-Gly635

Sequence:
 MGSSHHHHHH SSGLVPRGSH MASMTGGQQM GRGSEF- SASFILLGN GSLIYQVQVV
 GTGSEVVAMT LETKPQRKNQ RTVLCHMAGL QPGGHMAVGM CSGLGARGAH MLLQNELFLN
 VGTKDFPDGE LRGHVTALCY SGHSARYDRL PVPLAGALVL PPVRSQAAGH AWLSLDTHCH
 LHYEVLLAGL GGSEQGTVTA HLLGPPGMPG PQRLLKGFYG SEAQGVVKDL EPVLLRHLAQ
 GTASLLITTK SSPRG

Abbexa Ltd, Innovation Centre, Cambridge Science Park, Cambridge, CB4 0EY, UK
Telephone: +44 (0) 1223 755950 - Fax: +44 (0) 1223 755951 - E-Mail: info@abbexa.com

Tag: Two N-terminal tags, His-tag and T7-tag

Activity: Not tested

Concentration: Prior to lyophilization: 200 µg/ml

Buffer: Prior to lyophilization: PBS, pH 7.4, containing 0.01% Sarcosyl, 1 mM DTT, 5% Trehalose and Proclin-300.

Note: This product is for research use only.