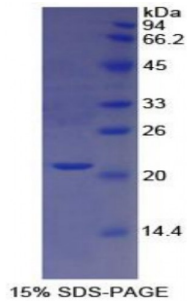


Abbexa Ltd, Innovation Centre, Cambridge Science Park, Cambridge, CB4 0EY, UK
Telephone: +44 (0) 1223 755950 - Fax: +44 (0) 1223 755951 - E-Mail: info@abbexa.com

Human Cathepsin L (CTSL) Protein

Catalogue No.: abx065826



SDS-PAGE analysis of Human Cathepsin L Protein.

Recombinant Cathepsin L (CTSL) is a recombinant protein from Human. It is produced in E.coli using Prokaryotic expression.

Target: Cathepsin L (CTSL)

Origin: Human

Host: E. coli

Tested Applications: ELISA, WB, IP, SDS-PAGE

Purity: > 95%

Form: Lyophilized

Conjugation: Unconjugated

Storage: Store at 2-8 °C for up to one month. Store at -80 °C for up to one year. Avoid repeated freeze/thaw cycles.

Expression: Recombinant

Molecular Weight: 20.6 kDa

Swiss Prot: [P07711](#)

Sequence Fragment: Ala114-Thr288

Sequence: MGHHHHHHSGSEF-APRSVDW REKGYVTPVK NQGQCGSCWA FSATGALEGQ MFRKTGRLIS
LSEQNLVDCS GPQGNEGCNG GLMDYAFQYV QDNGGLDSEE SYPYEATEES CKYNPKYSVA
NDTGFVDIPK QEKALMKAVA TVGPISVAID AGHESFLFYK EGIYFEPDCS SEDMDHGVLV
VGYGFEST

Tag: N-terminal His-tag

Abbexa Ltd, Innovation Centre, Cambridge Science Park, Cambridge, CB4 0EY, UK
Telephone: +44 (0) 1223 755950 - Fax: +44 (0) 1223 755951 - E-Mail: info@abbexa.com

Activity: Not tested

Concentration: Prior to lyophilization: 200 µg/ml

Buffer: Prior to lyophilization: 20 mM Tris, 150 mM NaCl, pH 8.0, containing 1 mM EDTA, 1 mM DTT, 0.01% Sarcosyl, 5% Trehalose and Proclin-300.

Note: This product is for research use only.