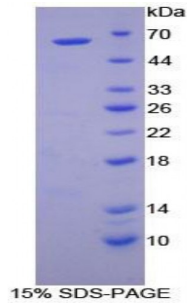


Abbexa Ltd, Innovation Centre, Cambridge Science Park, Cambridge, CB4 0EY, UK  
Telephone: +44 (0) 1223 755950 - Fax: +44 (0) 1223 755951 - E-Mail: info@abbexa.com

## Dog Cathepsin A (CTSA) Protein

Catalogue No.: abx065802



SDS-PAGE analysis of Dog Cathepsin A Protein.

Recombinant Cathepsin A (CTSA) is a recombinant protein from Dog. It is produced in E.coli using Prokaryotic expression.

**Target:** Cathepsin A (CTSA)

**Origin:** Dog

**Host:** E. coli

**Tested Applications:** ELISA, WB, IP, SDS-PAGE

**Purity:** > 95%

**Form:** Lyophilized

**Conjugation:** Unconjugated

**Storage:** Store at 2-8 °C for up to one month. Store at -80 °C for up to one year. Avoid repeated freeze/thaw cycles.

**Expression:** Recombinant

**Molecular Weight:** 62.2 kDa

**Swiss Prot:** [F1P919](#)

**Sequence Fragment:** Asp234-Leu494

Abbexa Ltd, Innovation Centre, Cambridge Science Park, Cambridge, CB4 0EY, UK  
Telephone: +44 (0) 1223 755950 - Fax: +44 (0) 1223 755951 - E-Mail: info@abbexa.com

**Sequence:** MSPILGYWKI KGLVQPTRLI LEYLEEKYEE HLYERDEGDK WRNKKFELGL EFPNLPYYID  
GDVKLTQSMA IIRYIADKHN MLGGCPKERA EISMLEGAVL DIRYGVSRIA YSKDFETLKV  
DFLSKLPEML KMFEDRLCHK TYLNGDHVTH PDFMLYDALD VVLYMDPMCL DAFPKLVCFK  
KRIEAIQID KYLKSSKYIA WPLQGQWQATF GGGDHPPKSD GSTSGSGHHH HHSAGLVPR  
GSTAIGMKET AAKFERQHM DSPDLGTLEV LFQGPLGSEF-DNSLVYF AYYHGLLGNR  
LWSSLQTHCC SQNKCNFYDN TDPECVTNLQ EVSRIVGNSG LNIYNLYAPC AGGVPGLHRY  
EKDTPVLDL GNIFTRLPFK RVWHQALLRS DDRLRMDPPC TTTAASTYLNPNPYVRKALH  
IPEQLPRWDM CNFLVNIQYR RLYQSMQSQY LKLLTTQKYR ILLYNGDVDM ACNFMGDEWF  
VDSLNQKMEV QRRPWLVDYG DSGEQIAGFV KEFSHIAFLT IKGAGHMVPT DKPQAALTMF SRFL

**Tag:** Two N-terminal tags, His-tag and GST-tag

**Activity:** Not tested

**Concentration:** Prior to lyophilization: 200 µg/ml

**Buffer:** Prior to lyophilization: PBS, pH 7.4, containing 0.01% Sarcosyl, 1 mM DTT, 5% Trehalose and Proclin-300.

**Note:** This product is for research use only.