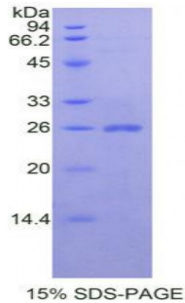


Mouse Cardiotrophin Like Cytokine Factor 1 (CLCF1) Protein

Catalogue No.: abx065732



SDS-PAGE analysis of Mouse CLCF1 Protein.

Recombinant CLCF1 is a recombinant protein from Mouse. It is produced in E.coli using Prokaryotic expression.

Target: Cardiotrophin Like Cytokine Factor 1 (CLCF1)

Origin: Mouse

Host: E. coli

Tested Applications: ELISA, WB, IP, SDS-PAGE

Purity: > 95%

Form: Lyophilized

Conjugation: Unconjugated

Storage: Store at 2-8 °C for up to one month. Store at -80 °C for up to one year. Avoid repeated freeze/thaw cycles.

Expression: Recombinant

Molecular Weight: 26.2 kDa

Swiss Prot: [Q9QZM3](#)

Sequence Fragment: Leu28-Phe225

Sequence: MGSSHHHHHH SSGLVPRGSH MASMTGGQQM GRGSEF-LNR TGDPGPGPSI QKTYDLTRYL
EHQLRSLAGT YLNYLGPPFN EPDFNPPRLG AETLPRATVN LEVWRSLNDR LRLTQNYEAY
SHLLCYLRGL NRQAATAELR RSLAHFCTSL QLLGSIAGV MATLGYPLPQ PLPGTEPAWA
PGPAHSDFLQ KMDDFWLLKE LQTWLWRSK DFNRLKKKMQ PPAASVTLHL EAHGF

Tag: Two N-terminal tags, His-tag and T7-tag

Abbexa Ltd, Innovation Centre, Cambridge Science Park, Cambridge, CB4 0EY, UK
Telephone: +44 (0) 1223 755950 - Fax: +44 (0) 1223 755951 - E-Mail: info@abbexa.com

Activity: Not tested

Concentration: Prior to lyophilization: 200 µg/ml

Buffer: Prior to lyophilization: PBS, pH 7.4, containing 0.01% Sarcosyl, 1 mM DTT, 5% Trehalose and Proclin-300.

Note: This product is for research use only.