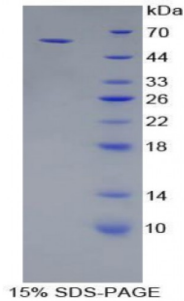


Abbexa Ltd, Innovation Centre, Cambridge Science Park, Cambridge, CB4 0EY, UK
Telephone: +44 (0) 1223 755950 - Fax: +44 (0) 1223 755951 - E-Mail: info@abbexa.com

Pig Cadherin, Epithelial (CDHE) Protein

Catalogue No.: abx065636



SDS-PAGE analysis of Pig Cadherin, Epithelial Protein.

Recombinant Cadherin, Epithelial (CDHE) is a recombinant protein from Pig. It is produced in E.coli using Prokaryotic expression.

Target: Cadherin, Epithelial (CDHE)

Origin: Pig

Host: E. coli

Tested Applications: ELISA, WB, IP, SDS-PAGE

Purity: > 95%

Form: Lyophilized

Conjugation: Unconjugated

Storage: Store at 2-8 °C for up to one month. Store at -80 °C for up to one year. Avoid repeated freeze/thaw cycles.

Expression: Recombinant

Molecular Weight: 55.3 kDa

Swiss Prot: [C6EVT4](#)

Sequence Fragment: Phe375-Thr631

Abbexa Ltd, Innovation Centre, Cambridge Science Park, Cambridge, CB4 0EY, UK
Telephone: +44 (0) 1223 755950 - Fax: +44 (0) 1223 755951 - E-Mail: info@abbexa.com

Sequence: MRNKKFELGL EFPNLPYYID GDVKLTQSMA IIRYIADKHN MLGGCPKERA EISMLEGAVL
DIRYGVSRIA YSKDFETLKV DFLSKLPEML KMFEDRLCHK TYLNGDHVTH PDFMLYDALD
VVLYMDPMCL DAFPKLVCFK KRIEAIQID KYLKSSKYIA WPLQGQWQATF GGGDHPPKSD
GSTSGSGHHH HHHSAGLVPR GSTAIGMKET AAAKFERQHM DSPDLGTLEV LFQGPLGSEF-
FNPTSY QGSVPENEAN VAITTLTVD GDVANTPAWV AVYITLNDNE KQFVVITDPV TNEGVLTAK
GLDFEAKQY ILYVAVTNVA PFEVTLSTST ATVTVDVIDV NEAPIFIPAQ KRVEVPEDFG
VGLEITSYTA REPDTFMEQK ITYRIWRDAA NWLEINPDTG AITRAELDR ENFEHVKNST
YTALIIATDN GSPPATGTGT LLLFLDDVND NGPIPEPRNM DFCQRNPQPH VININDPDL
PNTSPFTAEL T

Tag: Two N-terminal tags, His-tag and GST-tag

Activity: Not tested

Concentration: Prior to lyophilization: 200 µg/ml

Buffer: Prior to lyophilization: PBS, pH 7.4, containing 0.01% Sarcosyl, 1 mM DTT, 5% Trehalose and Proclin-300.

Note: This product is for research use only.