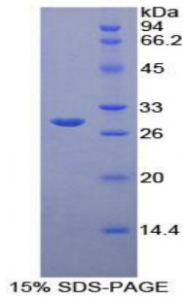


Rat B-Cell CLL/Lymphoma 3 (Bcl3) Protein

Catalogue No.: abx065510



SDS-PAGE analysis of Rat B-Cell CLL/Lymphoma 3 Protein.

Recombinant B-Cell CLL/Lymphoma 3 (Bcl3) is a recombinant protein from Rat. It is produced in E.coli using Prokaryotic expression.

Target: B-Cell CLL/Lymphoma 3 (Bcl3)

Origin: Rat

Host: E. coli

Tested Applications: ELISA, WB, IP, SDS-PAGE

Purity: > 95%

Form: Lyophilized

Conjugation: Unconjugated

Storage: Store at 2-8 °C for up to one month. Store at -80 °C for up to one year. Avoid repeated freeze/thaw cycles.

Expression: Recombinant

Molecular Weight: 30.1 kDa

Swiss Prot: [D3ZQF8](#)

Sequence Fragment: Asp127-Asn376

Sequence: MGSSHHHHHH SGLVPRGSH MASMTGGQQM GRGS- DEDG DTPLHIAVVQ NNKTAVYRIL
SLFKLGNREV DVHNNLRQTP LHLAVITTLTP DIVRLLVTAG ASPMALDRHG QTAVHLACEH
RSPSCLQALL DSATPGSVDL EARNYEGLTA LHVAVNTGCQ EAVLLLLERG ADIDAVDIKS
GRSPLIHAVE NNSLNMVQLL LLHGAVNAQ MYSGSSALHS ASGRLLPLV RTLVRSGADS
GLKNCHNDTP LMVARSRRVI DILRGKASRA ASGSQDPSP DQSATN

Abbexa Ltd, Innovation Centre, Cambridge Science Park, Cambridge, CB4 0EY, UK
Telephone: +44 (0) 1223 755950 - Fax: +44 (0) 1223 755951 - E-Mail: info@abbexa.com

Tag: Two N-terminal tags, His-tag and T7-tag

Activity: Not tested

Concentration: Prior to lyophilization: 200 µg/ml

Buffer: Prior to lyophilization: PBS, pH 7.4, containing 0.01% Sarcosyl, 1 mM DTT, 5% Trehalose and Proclin-300.

Note: This product is for research use only.