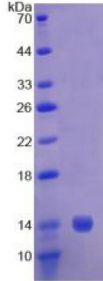


Human Adenylyl Cyclase Associated Protein 1 (CAP1) Protein

Catalogue No.: abx065165



SDS-PAGE analysis of Human CAP1 Protein.

Recombinant Adenylyl Cyclase Associated Protein 1 (CAP1) is a recombinant protein from Human. It is produced in E.coli using Prokaryotic expression.

Target: Adenylyl Cyclase Associated Protein 1 (CAP1)

Origin: Human

Host: E. coli

Tested Applications: ELISA, WB, IP, SDS-PAGE

Purity: > 95%

Form: Lyophilized

Conjugation: Unconjugated

Storage: Store at 2-8 °C for up to one month. Store at -80 °C for up to one year. Avoid repeated freeze/thaw cycles.

Expression: Recombinant

Molecular Weight: 13.6 kDa

Swiss Prot: [Q01518](#)

Sequence Fragment: Ala38-Lys149

Sequence: MGHHHHHHSG SEF-AGAAPYV QAFDSSLGAP VAEYLKISKE IGGDVQKHAE MVHTGLKLER
ALLVTASQCQ QPAENKLSL LAPISEQIKE VITFREKNRG SKLFNHLSAV SESIQALGWV AMAPK

Tag: N-terminal His-tag

Abbexa Ltd, Innovation Centre, Cambridge Science Park, Cambridge, CB4 0EY, UK
Telephone: +44 (0) 1223 755950 - Fax: +44 (0) 1223 755951 - E-Mail: info@abbexa.com

Activity: Not tested

Concentration: Prior to lyophilization: 200 µg/ml

Buffer: Prior to lyophilization: 20 mM Tris, 150 mM NaCl, pH 8.0, containing 1 mM EDTA, 1 mM DTT, 0.01% Sarcosyl, 5% Trehalose and Proclin-300.

Note: This product is for research use only.