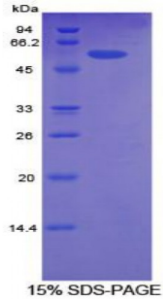


Abbexa Ltd, Innovation Centre, Cambridge Science Park, Cambridge, CB4 0EY, UK
Telephone: +44 (0) 1223 755950 - Fax: +44 (0) 1223 755951 - E-Mail: info@abbexa.com

Human Activated Leukocyte Cell Adhesion Molecule (ALCAM) Protein

Catalogue No.: abx065116



SDS-PAGE analysis of Human ALCAM Protein.

Recombinant ALCAM is a recombinant protein from Human. It is produced in E.coli using Prokaryotic expression.

Target: Activated Leukocyte Cell Adhesion Molecule (ALCAM)

Origin: Human

Host: E. coli

Tested Applications: ELISA, WB, IP, SDS-PAGE

Purity: > 95%

Form: Lyophilized

Conjugation: Unconjugated

Storage: Store at 2-8 °C for up to one month. Store at -80 °C for up to one year. Avoid repeated freeze/thaw cycles.

Expression: Recombinant

Molecular Weight: 57.6 kDa

Swiss Prot: [Q13740](#)

Sequence Fragment: Trp28-Lys527

Abbexa Ltd, Innovation Centre, Cambridge Science Park, Cambridge, CB4 0EY, UK
Telephone: +44 (0) 1223 755950 - Fax: +44 (0) 1223 755951 - E-Mail: info@abbexa.com

Sequence: MGHHHHHHSGSEF-WYT VNSAYGDTII IPCRLDVPQN LMFGKWKYEK PDGSPVFI AF
RSSTKKSQY DDVPEYKDRL NLSNYTL SI SNARISDEKR FVCMLVTE DN VFEAPTIVKV
FKQPSKPEIV SKALFLETEQ LKKLGD CISE DSYPDGNITW YRNGKVLHPL EGAVVIIFKK
EMDPVTQLYT MTSTLEYKTT KADIQMPFTC SVTYYGPSGQ KTIHSEQAVF DIYYPT EQVT
IQVLPPKNAI KEGDNITLKC LGNGNPPPEE FLFYLPGQPE GIRSSNTYTL TDVRRNATGD
YKCSLIDKKS MIASTAITVH YLDLSLNPSG EVTRQIGDAL PVSCTISASR NATVVWMKDN
IRLRSSPSFS SLHYQDAGNY VCETALQEVE GLKKRESLTL IVEGKPKQIKM TKKTDPSGLS
KTIICHVEGF PKPAIQWTIT GSGSVINQTE ESPYINGRYY SKIIISPEEN VTLTCTAENQ LERTVNSLNV
SAISIPEHDE ADEISDENRE KVNDQAK

Tag: N-terminal His-tag

Activity: Not tested

Concentration: Prior to lyophilization: 200 µg/ml

Buffer: Prior to lyophilization: PBS, pH 7.4, containing 0.01% Sarcosyl, 1 mM DTT, 5% Trehalose and Proclin-300.

Note: This product is for research use only.