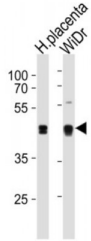


Abbexa Ltd, Innovation Centre, Cambridge Science Park, Cambridge, CB4 0EY, UK
Telephone: +44 (0) 1223 755950 - Fax: +44 (0) 1223 755951 - E-Mail: info@abbexa.com

SAP30-Binding Protein (SAP30BP) Antibody

Catalogue No.: abx034856



Induces cell death. May act as a transcriptional corepressor of a gene related to cell survival. May be involved in the regulation of beta-2-microglobulin genes.

Target: SAP30BP

Reactivity: Human

Host: Rabbit

Clonality: Polyclonal

Tested Applications: WB, IF/ICC

Recommended dilutions: Optimal dilutions/concentrations should be determined by the end user.

Immunogen: Human SAP30BP.

Purification: Peptide Affinity Purified Rabbit Polyclonal Antibody.

Isotype: IgG

Conjugation: Unconjugated

Specificity: This SAP30BP antibody is generated from rabbits immunized with a KLH conjugated synthetic peptide between 160-188 amino acids from the Central region of human SAP30BP.

Storage: Aliquot and store at -20 °C. Avoid repeated freeze/thaw cycles.

Swiss Prot: [Q9UHR5](#)

Gene Symbol: SAP30BP

NCBI Accession: NP_037392.1

Abbexa Ltd, Innovation Centre, Cambridge Science Park, Cambridge, CB4 0EY, UK
Telephone: +44 (0) 1223 755950 - Fax: +44 (0) 1223 755951 - E-Mail: info@abbexa.com

Buffer: PBS with 0.09% (W/V) sodium azide. This antibody is purified through a protein A column, followed by peptide affinity purification.

Note: This product is for research use only.