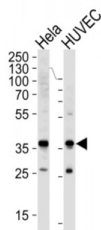
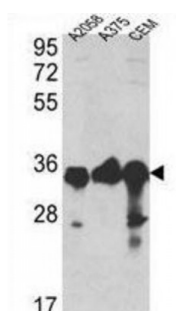
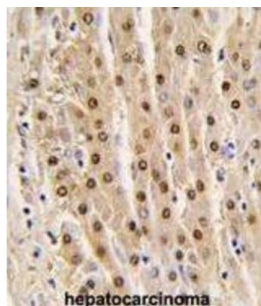


Glyceraldehyde-3-Phosphate Dehydrogenase (GAPDH) Antibody

Catalogue No.: abx033734



GAPDH catalyzes an important energy-yielding step in carbohydrate metabolism, the reversible oxidative phosphorylation of glyceraldehyde-3-phosphate in the presence of inorganic phosphate and nicotinamide adenine dinucleotide (NAD). The enzyme exists as a tetramer of identical chains.

Target: Glyceraldehyde-3-Phosphate Dehydrogenase (GAPDH)

Reactivity: Human

Host: Rabbit

Clonality: Polyclonal

Tested Applications: WB, IHC, IF/ICC

Recommended dilutions: Optimal dilutions/concentrations should be determined by the end user.

Abbexa Ltd, Innovation Centre, Cambridge Science Park, Cambridge, CB4 0EY, UK
Telephone: +44 (0) 1223 755950 - Fax: +44 (0) 1223 755951 - E-Mail: info@abbexa.com

Immunogen:	Human GAPDH.
Purification:	Purified Rabbit Polyclonal Antibody.
Isotype:	IgG
Conjugation:	Unconjugated
Specificity:	This GAPDH antibody is generated from rabbits immunized with a KLH conjugated synthetic peptide between 62-91 amino acids from the N-terminal region of human GAPDH.
Storage:	Aliquot and store at -20 °C. Avoid repeated freeze/thaw cycles.
Swiss Prot:	P04406
NCBI Accession:	NP_001243728.1, NP_002037.2
Buffer:	PBS with 0.09% (W/V) sodium azide. This antibody is prepared by Saturated Ammonium Sulfate (SAS) precipitation followed by dialysis against PBS.
Note:	This product is for research use only.