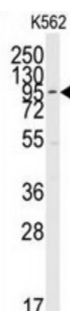
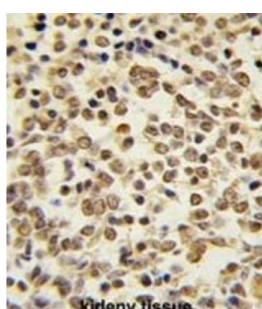
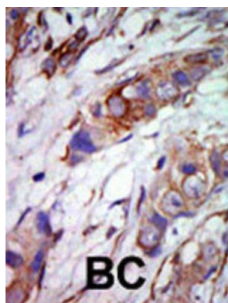


## Mitogen Activated Protein Kinase 7 (MAPK7) Antibody

Catalogue No.: abx033440



MEK5 and ERK5, a member of the MAP kinase subfamily of the Ser/Thr protein kinases, interact specifically with one another and not with MEK1/ERK1 or MEK2/ERK2 pathways. ERK5 is activated by tyrosine and threonine phosphorylation. It is expressed in many adult tissues, abundantly in heart, placenta, lung, kidney and skeletal muscle, but is not detectable in liver. The second proline-rich region may interact with actin targeting the kinase to a specific location in the cell. ERK5 is autophosphorylated on threonine and tyrosine residues when the C-terminal part of the kinase, which could have a regulatory role, is absent.

<b>Target:</b>	MAPK7
<b>Reactivity:</b>	Human
<b>Host:</b>	Rabbit
<b>Clonality:</b>	Polyclonal
<b>Tested Applications:</b>	WB, IHC

Abbexa Ltd, Innovation Centre, Cambridge Science Park, Cambridge, CB4 0EY, UK  
Telephone: +44 (0) 1223 755950 - Fax: +44 (0) 1223 755951 - E-Mail: [info@abbexa.com](mailto:info@abbexa.com)

**Recommended dilutions:** Optimal dilutions/concentrations should be determined by the end user.

**Immunogen:** Human MAPK7.

**Purification:** Purified Rabbit Polyclonal Antibody.

**Isotype:** IgG

**Conjugation:** Unconjugated

**Specificity:** This MAPK7 antibody is generated from rabbits immunized with a KLH conjugated synthetic peptide between 776-805 amino acids from the C-terminal region of human MAPK7.

**Storage:** Aliquot and store at -20 °C. Avoid repeated freeze/thaw cycles.

**Swiss Prot:** [Q13164](#)

**Buffer:** PBS with 0.09% (W/V) sodium azide. This antibody is purified through a protein G column, eluted with high and low pH buffers and neutralized immediately, followed by dialysis against PBS.

**Note:** This product is for research use only.