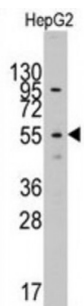
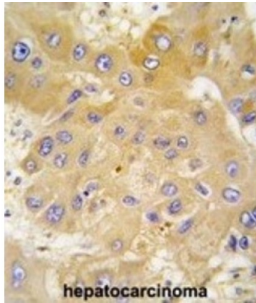


Abbexa Ltd, Innovation Centre, Cambridge Science Park, Cambridge, CB4 0EY, UK  
Telephone: +44 (0) 1223 755950 - Fax: +44 (0) 1223 755951 - E-Mail: info@abbexa.com

## Cytosol Aminopeptidase (LAP3) Antibody

Catalogue No.: abx033307



LAP3 is presumably involved in the processing and regular turnover of intracellular proteins. It catalyzes the removal of unsubstituted N-terminal amino acids from various peptides. Release of an N-terminal amino acid, Xaa-Yaa-, in which Xaa is preferably Leu, but may be other amino acids including Pro although not Arg or Lys, and Yaa may be Pro.

**Target:** LAP3

**Reactivity:** Human

**Host:** Rabbit

**Clonality:** Polyclonal

**Tested Applications:** WB, IHC

**Recommended dilutions:** Optimal dilutions/concentrations should be determined by the end user.

**Immunogen:** Human LAP3.

**Purification:** Purified Rabbit Polyclonal Antibody.

**Isotype:** IgG

**Conjugation:** Unconjugated

Abbexa Ltd, Innovation Centre, Cambridge Science Park, Cambridge, CB4 0EY, UK  
Telephone: +44 (0) 1223 755950 - Fax: +44 (0) 1223 755951 - E-Mail: [info@abbexa.com](mailto:info@abbexa.com)

- Specificity:** This LAP3 antibody is generated from rabbits immunized with a KLH conjugated synthetic peptide between 89-119 amino acids from the N-terminal region of human LAP3.
- Storage:** Aliquot and store at -20 °C. Avoid repeated freeze/thaw cycles.
- Swiss Prot:** [P28838](#)
- Buffer:** PBS with 0.09% (W/V) sodium azide. This antibody is prepared by Saturated Ammonium Sulfate (SAS) precipitation followed by dialysis against PBS.
- Note:** This product is for research use only.