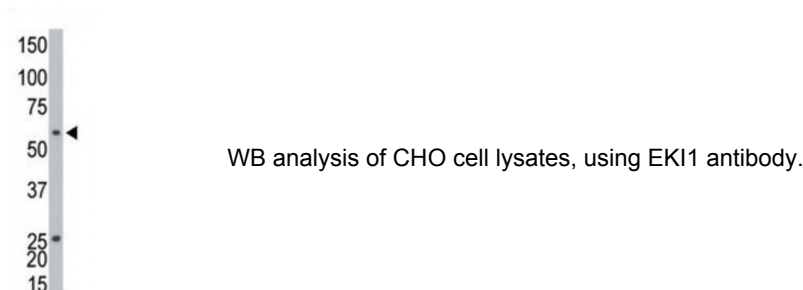


Ethanolamine Kinase (ETNK1) Antibody

Catalogue No.: abx033153



Ethanolamine kinase 1 (EK1), functions in the first committed step of the phosphatidylethanolamine synthesis pathway. This cytosolic enzyme is specific for ethanolamine and exhibits negligible kinase activity on choline.

Target: Ethanolamine Kinase**Reactivity:** Human, Hamster, Mouse**Host:** Rabbit**Clonality:** Polyclonal**Tested Applications:** WB**Recommended dilutions:** Optimal dilutions/concentrations should be determined by the end user.**Immunogen:** Human Ethanolamine Kinase.**Purification:** Purified Rabbit Polyclonal Antibody.**Isotype:** IgG**Conjugation:** Unconjugated**Specificity:** This Ethanolamine Kinase (EK1) antibody is generated from rabbits immunized with a KLH conjugated synthetic peptide between 356-386 amino acids from the C-terminal region of human Ethanolamine Kinase (EK1).**Storage:** Aliquot and store at -20 °C. Avoid repeated freeze/thaw cycles.**Swiss Prot:** [Q9HBU6](#)**Buffer:** PBS with 0.09% (W/V) sodium azide. This antibody is purified through a protein G column, eluted with high and low pH buffers and neutralized immediately, followed by dialysis against PBS.

Abbexa Ltd, Innovation Centre, Cambridge Science Park, Cambridge, CB4 0EY, UK
Telephone: +44 (0) 1223 755950 - Fax: +44 (0) 1223 755951 - E-Mail: info@abbexa.com

Note: This product is for research use only.