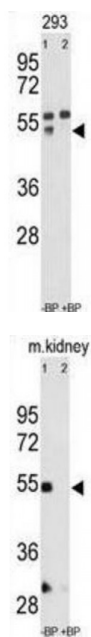
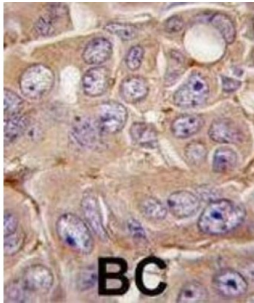


Matrix Metalloproteinase 12 (MMP12) Antibody

Catalogue No.: abx032724



Proteins of the matrix metalloproteinase (MMP) family are involved in the breakdown of extracellular matrix in normal physiological processes, such as embryonic development, reproduction, and tissue remodeling, as well as in disease processes, such as arthritis and metastasis. Most MMPs are secreted as inactive proproteins which are activated when cleaved by extracellular proteinases. MMP12 may be involved in tissue injury and remodeling. This protein has significant elastolytic activity. MMP12 can accept large and small amino acids at the P1' site, but has a preference for leucine. Aromatic or hydrophobic residues are preferred at the P1 site, with small hydrophobic residues (preferably alanine) occupying P3. The protein is found in alveolar macrophages but not in peripheral blood monocytes. MMP12 can be induced by exposure to lipopolysaccharide, and is inhibited by dexamethasone.

Target: Matrix Metalloproteinase 12 (MMP12)

Reactivity: Human, Mouse

Host: Rabbit

Clonality: Polyclonal

Abbexa Ltd, Innovation Centre, Cambridge Science Park, Cambridge, CB4 0EY, UK
Telephone: +44 (0) 1223 755950 - Fax: +44 (0) 1223 755951 - E-Mail: info@abbexa.com

Tested Applications: WB, IHC, IF/ICC

Recommended dilutions: Optimal dilutions/concentrations should be determined by the end user.

Immunogen: Human MMP12.

Purification: Purified Rabbit Polyclonal Antibody.

Isotype: IgG

Conjugation: Unconjugated

Specificity: This MMP12 antibody is generated from rabbits immunized with a KLH conjugated synthetic peptide between 391-420 amino acids from the C-terminal region of human MMP12.

Storage: Aliquot and store at -20 °C. Avoid repeated freeze/thaw cycles.

Swiss Prot: [P39900](#)

NCBI Accession: NP_002417.2

Buffer: PBS with 0.09% (W/V) sodium azide. This antibody is purified through a protein G column, eluted with high and low pH buffers and neutralized immediately, followed by dialysis against PBS.

Note: This product is for research use only.