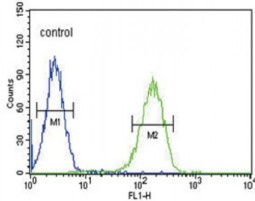


Abbexa Ltd, Innovation Centre, Cambridge Science Park, Cambridge, CB4 0EY, UK
 Telephone: +44 (0) 1223 755950 - Fax: +44 (0) 1223 755951 - E-Mail: info@abbexa.com

Calcium Voltage-Gated Channel Auxiliary Subunit Alpha2delta 4 (CACNA2D4) Antibody

Catalogue No.: abx032592



CACNA2D4 is a member of the alpha-2/delta subunit family, a protein in the voltage-dependent calcium channel complex. Calcium channels mediate the influx of calcium ions into the cell upon membrane polarization and consist of a complex of alpha-1, alpha-2/delta, beta, and gamma subunits in a 1:1:1:1 ratio. Various versions of each of these subunits exist, either expressed from similar genes or the result of alternative splicing. Research on a highly similar protein in rabbit suggests the protein described in this record is cleaved into alpha-2 and delta subunits. Alternate transcriptional splice variants of this gene have been observed but have not been thoroughly characterized.

Target: CACNA2D4

Reactivity: Human

Host: Rabbit

Clonality: Polyclonal

Tested Applications: WB, FCM

Recommended dilutions: Optimal dilutions/concentrations should be determined by the end user.

Immunogen: Human CACNA2D4.

Purification: Peptide Affinity Purified Rabbit Polyclonal Antibody.

Abbexa Ltd, Innovation Centre, Cambridge Science Park, Cambridge, CB4 0EY, UK
Telephone: +44 (0) 1223 755950 - Fax: +44 (0) 1223 755951 - E-Mail: info@abbexa.com

Isotype:	IgG
Conjugation:	Unconjugated
Specificity:	This CACNA2D4 antibody is generated from rabbits immunized with a KLH conjugated synthetic peptide between 89-118 amino acids from the N-terminal region of human CACNA2D4.
Storage:	Aliquot and store at -20 °C. Avoid repeated freeze/thaw cycles.
Swiss Prot:	Q7Z3S7
Gene Symbol:	CACNA2D4
Buffer:	PBS with 0.09% (W/V) sodium azide. This antibody is purified through a protein A column, followed by peptide affinity purification.
Note:	This product is for research use only.