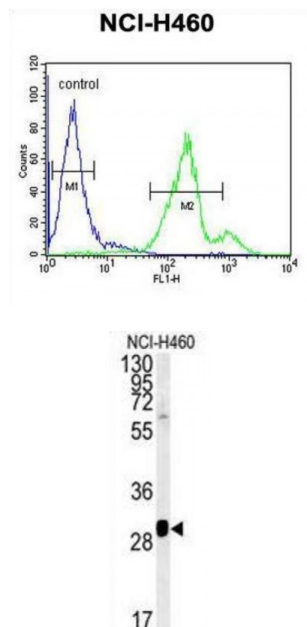


Abbexa Ltd, Innovation Centre, Cambridge Science Park, Cambridge, CB4 0EY, UK
 Telephone: +44 (0) 1223 755950 - Fax: +44 (0) 1223 755951 - E-Mail: info@abbexa.com

SC31B Antibody

Catalogue No.: abx032570



This gene encodes a protein of unknown function. The protein has moderate similarity to rat VAP1 protein which is an endosomal membrane-associated protein, containing a putative Ca²⁺/calmodulin-dependent kinase II phosphorylation site.

Target: SC31B

Reactivity: Human

Host: Rabbit

Clonality: Polyclonal

Tested Applications: WB, FCM

Recommended dilutions: Optimal dilutions/concentrations should be determined by the end user.

Immunogen: Human SC31B.

Purification: Peptide Affinity Purified Rabbit Polyclonal Antibody.

Isotype: IgG

Conjugation: Unconjugated

Abbexa Ltd, Innovation Centre, Cambridge Science Park, Cambridge, CB4 0EY, UK
Telephone: +44 (0) 1223 755950 - Fax: +44 (0) 1223 755951 - E-Mail: info@abbexa.com

- Specificity:** This SC31B antibody is generated from rabbits immunized with a KLH conjugated synthetic peptide between 1076-1104 amino acids from the C-terminal region of human SC31B.
- Storage:** Aliquot and store at -20 °C. Avoid repeated freeze/thaw cycles.
- Swiss Prot:** [Q9NQW1](#)
- Gene Symbol:** SC31B
- Buffer:** PBS with 0.09% (W/V) sodium azide. This antibody is purified through a protein A column, followed by peptide affinity purification.
- Note:** This product is for research use only.