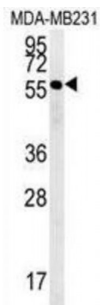
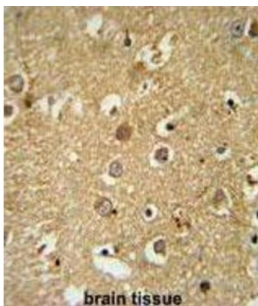
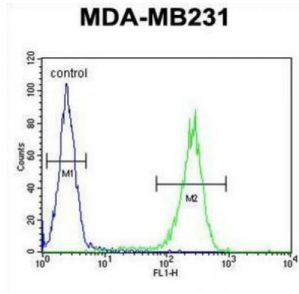


Abbexa Ltd, Innovation Centre, Cambridge Science Park, Cambridge, CB4 0EY, UK  
 Telephone: +44 (0) 1223 755950 - Fax: +44 (0) 1223 755951 - E-Mail: info@abbexa.com

## Rab11 Family-Interacting Protein 2 (RAB11FIP2) Antibody

Catalogue No.: abx032532



RAB11FIP2 is an adapter protein that plays a role in the secretory pathway. It is thought to be important for endosome recycling and receptor-mediated endocytosis. In endosome recycling, RAB11-FIP2 regulates vesicle transport from the endosomal recycling compartment (ERC) to the plasma membrane.

<b>Target:</b>	RAB11FIP2
<b>Reactivity:</b>	Human
<b>Host:</b>	Rabbit
<b>Clonality:</b>	Polyclonal
<b>Tested Applications:</b>	WB, IHC, FCM

**Recommended dilutions:** Optimal dilutions/concentrations should be determined by the end user.

Abbexa Ltd, Innovation Centre, Cambridge Science Park, Cambridge, CB4 0EY, UK  
Telephone: +44 (0) 1223 755950 - Fax: +44 (0) 1223 755951 - E-Mail: [info@abbexa.com](mailto:info@abbexa.com)

<b>Immunogen:</b>	Human RAB11FIP2.
<b>Purification:</b>	Peptide Affinity Purified Rabbit Polyclonal Antibody.
<b>Isotype:</b>	IgG
<b>Conjugation:</b>	Unconjugated
<b>Specificity:</b>	This RAB11FIP2 antibody is generated from rabbits immunized with a KLH conjugated synthetic peptide between 345-374 amino acids from the Central region of human RAB11FIP2.
<b>Storage:</b>	Aliquot and store at -20 °C. Avoid repeated freeze/thaw cycles.
<b>Swiss Prot:</b>	<a href="#">Q7L804</a>
<b>Gene Symbol:</b>	RAB11FIP2
<b>Buffer:</b>	PBS with 0.09% (W/V) sodium azide. This antibody is purified through a protein A column, followed by peptide affinity purification.
<b>Note:</b>	This product is for research use only.