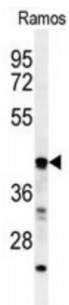
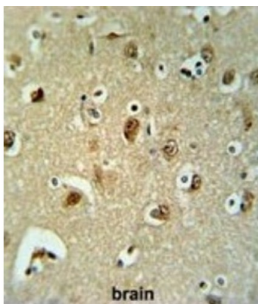
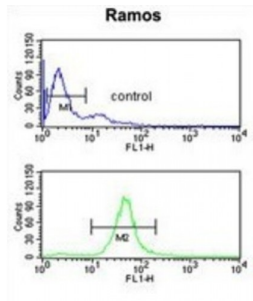


Abbexa Ltd, Innovation Centre, Cambridge Science Park, Cambridge, CB4 0EY, UK
 Telephone: +44 (0) 1223 755950 - Fax: +44 (0) 1223 755951 - E-Mail: info@abbexa.com

Beta-1,3-Galactosyltransferase 6 (B3GALT6) Antibody

Catalogue No.: abx032379



B3GALT6, Beta-1, 3-galactosyltransferase that transfers galactose from UDP-galactose to substrates with a terminal beta-linked galactose residue. B3GALT6 has a preference for galactose-beta-1, 4-xylose that is found in the linker region of glycosaminoglycans, such as heparan sulfate and chondroitin sulfate. B3GALT6 has no activity towards substrates with terminal glucosamine or galactosamine residues.

Target:	B3GALT6
Reactivity:	Human
Host:	Rabbit
Clonality:	Polyclonal
Tested Applications:	WB, IHC, FCM

Recommended dilutions: Optimal dilutions/concentrations should be determined by the end user.

Abbexa Ltd, Innovation Centre, Cambridge Science Park, Cambridge, CB4 0EY, UK
Telephone: +44 (0) 1223 755950 - Fax: +44 (0) 1223 755951 - E-Mail: info@abbexa.com

Immunogen:	Human B3GALT6.
Purification:	Peptide Affinity Purified Rabbit Polyclonal Antibody.
Isotype:	IgG
Conjugation:	Unconjugated
Specificity:	This B3GALT6 antibody is generated from rabbits immunized with a KLH conjugated synthetic peptide between 241-269 amino acids from the C-terminal region of human B3GALT6.
Storage:	Aliquot and store at -20 °C. Avoid repeated freeze/thaw cycles.
Swiss Prot:	<u>Q96L58</u>
Gene Symbol:	B3GALT6
Buffer:	PBS with 0.09% (W/V) sodium azide. This antibody is purified through a protein A column, followed by peptide affinity purification.
Note:	This product is for research use only.