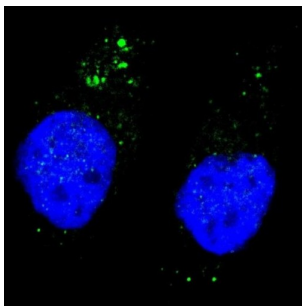
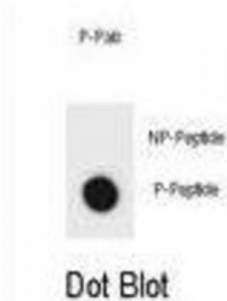


Abbexa Ltd, Innovation Centre, Cambridge Science Park, Cambridge, CB4 0EY, UK
Telephone: +44 (0) 1223 755950 - Fax: +44 (0) 1223 755951 - E-Mail: info@abbexa.com

ULK1 (pS556) Antibody

Catalogue No.: abx032213



Involved in autophagy. Required for autophagosome formation (By similarity). Target of the TOR kinase signaling pathway that regulates autophagy through the control of phosphorylation status of ATG13/KIAA0652 and ULK1, and the regulation of the ATG13-ULK1-RB1CC1 complex (By similarity). Phosphorylates ATG13/KIAA0652. Involved in axon growth (By similarity). Plays an essential role in neurite extension of cerebellar granule cells (By similarity).

Target: ULK1 (pS556)

Reactivity: Human

Host: Rabbit

Clonality: Polyclonal

Tested Applications: IF/ICC, DB

Recommended dilutions: Optimal dilutions/concentrations should be determined by the end user.

Immunogen: Human ULK1 (phospho-Ser556).

Purification: Peptide Affinity Purified Rabbit Polyclonal Antibody.

Isotype: IgG

Conjugation: Unconjugated

Abbexa Ltd, Innovation Centre, Cambridge Science Park, Cambridge, CB4 0EY, UK
Telephone: +44 (0) 1223 755950 - Fax: +44 (0) 1223 755951 - E-Mail: info@abbexa.com

- Specificity:** This ULK1 Antibody is generated from rabbits immunized with a KLH conjugated synthetic phosphopeptide corresponding to amino acid residues surrounding S556 of human ULK1.
- Storage:** Aliquot and store at -20 °C. Avoid repeated freeze/thaw cycles.
- Swiss Prot:** [O75385](#)
- Buffer:** PBS with 0.09% (W/V) sodium azide. This antibody is purified through a protein A column, followed by two-step phosphospecific peptide affinity purification.
- Note:** This product is for research use only.