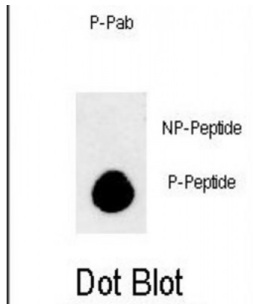


Abbexa Ltd, Innovation Centre, Cambridge Science Park, Cambridge, CB4 0EY, UK
Telephone: +44 (0) 1223 755950 - Fax: +44 (0) 1223 755951 - E-Mail: info@abbexa.com

APG8b (MAP1LC3B) (pT93 / Y99) Antibody

Catalogue No.: abx032094



The product of this gene is a subunit of neuronal microtubule-associated MAP1A and MAP1B proteins, which are involved in microtubule assembly and important for neurogenesis. Studies on the rat homolog implicate a role for this gene in autophagy, a process that involves the bulk degradation of cytoplasmic component.

Target: APG8b (MAP1LC3B) (pT93/Y99)

Reactivity: Human

Host: Rabbit

Clonality: Polyclonal

Tested Applications: DB

Recommended dilutions: Optimal dilutions/concentrations should be determined by the end user.

Immunogen: Human APG8b (MAP1LC3B) (phospho-Thr93/Tyr99).

Purification: Peptide Affinity Purified Rabbit Polyclonal Antibody.

Isotype: IgG

Conjugation: Unconjugated

Specificity: This APG8b (MAP1LC3B) Antibody is generated from rabbits immunized with a KLH conjugated synthetic phosphopeptide corresponding to amino acid residues surrounding T93/Y99 of human APG8b (MAP1LC3B).

Storage: Aliquot and store at -20 °C. Avoid repeated freeze/thaw cycles.

Swiss Prot: [Q9GZQ8](#)

Abbexa Ltd, Innovation Centre, Cambridge Science Park, Cambridge, CB4 0EY, UK
Telephone: +44 (0) 1223 755950 - Fax: +44 (0) 1223 755951 - E-Mail: info@abbexa.com

Buffer: PBS with 0.09% (W/V) sodium azide. This antibody is purified through a protein A column, followed by two-step phosphospecific peptide affinity purification.

Note: This product is for research use only.