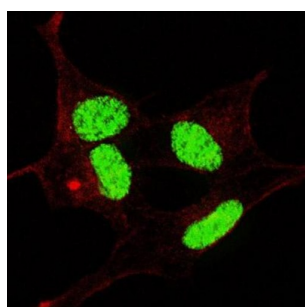
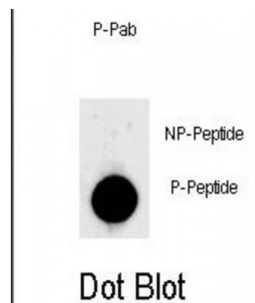


Abbexa Ltd, Innovation Centre, Cambridge Science Park, Cambridge, CB4 0EY, UK
Telephone: +44 (0) 1223 755950 - Fax: +44 (0) 1223 755951 - E-Mail: info@abbexa.com

LIN28 (pS134) Antibody

Catalogue No.: abx032091



LIN28 is probable transcription factor. It plays a critical role in the control of immune response.

Target: LIN28 (pS134)

Reactivity: Human

Host: Rabbit

Clonality: Polyclonal

Tested Applications: IF/ICC, DB

Recommended dilutions: Optimal dilutions/concentrations should be determined by the end user.

Immunogen: Human LIN28 (phospho-Ser134).

Purification: Peptide Affinity Purified Rabbit Polyclonal Antibody.

Isotype: IgG

Conjugation: Unconjugated

Specificity: This LIN28 Antibody is generated from rabbits immunized with a KLH conjugated synthetic phosphopeptide corresponding to amino acid residues surrounding S134 of human LIN28.

Abbexa Ltd, Innovation Centre, Cambridge Science Park, Cambridge, CB4 0EY, UK
Telephone: +44 (0) 1223 755950 - Fax: +44 (0) 1223 755951 - E-Mail: info@abbexa.com

Storage: Aliquot and store at -20 °C. Avoid repeated freeze/thaw cycles.

Swiss Prot: [Q9H9Z2](#)

Buffer: PBS with 0.09% (W/V) sodium azide. This antibody is purified through a protein A column, followed by two-step phosphospecific peptide affinity purification.

Note: This product is for research use only.