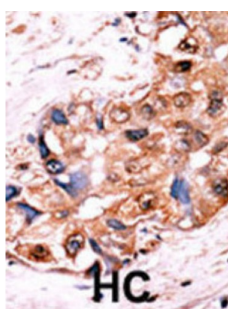
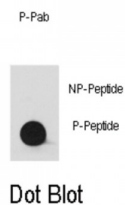


Abbexa Ltd, Innovation Centre, Cambridge Science Park, Cambridge, CB4 0EY, UK
Telephone: +44 (0) 1223 755950 - Fax: +44 (0) 1223 755951 - E-Mail: info@abbexa.com

YES1 (pY537) / SRC (pY530) Antibody

Catalogue No.: abx031917



This protein has tyrosine kinase activity and belongs to the src family of proteins. The YES1 gene is the cellular homolog of the Yamaguchi sarcoma virus oncogene.

Target: YES1 (pY537) /SRC (pY530)

Reactivity: Human

Host: Rabbit

Clonality: Polyclonal

Tested Applications: IHC, DB

Recommended dilutions: Optimal dilutions/concentrations should be determined by the end user.

Immunogen: Human YES1 (phospho-Tyr537) /SRC (phospho-Tyr530).

Purification: Peptide Affinity Purified Rabbit Polyclonal Antibody.

Isotype: IgG

Conjugation: Unconjugated

Abbexa Ltd, Innovation Centre, Cambridge Science Park, Cambridge, CB4 0EY, UK
Telephone: +44 (0) 1223 755950 - Fax: +44 (0) 1223 755951 - E-Mail: info@abbexa.com

- Specificity:** This SRC Antibody is generated from rabbits immunized with a KLH conjugated synthetic phosphopeptide corresponding to amino acid residues surrounding Y530 of human SRC.
- Storage:** Aliquot and store at -20 °C. Avoid repeated freeze/thaw cycles.
- Swiss Prot:** [P12931](#)
- NCBI Accession:** NP_005408.1, NP_938033.1
- Buffer:** PBS with 0.09% (W/V) sodium azide. This antibody is first purified by protein G affinity chromatography. Then, the antibody fraction is peptide affinity purified in a 2-step procedure with control and phosphorylated peptides. The phospho-specific antibody is eluted with high and low pH buffers and neutralized immediately, followed by dialysis against PBS.
- Note:** This product is for research use only.