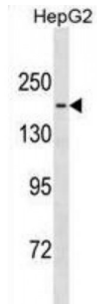


Tau Tubulin Kinase 1 (TTBK1) Antibody

Catalogue No.: abx031335



Serine/threonine kinase which is able to phosphorylate TAU on serine, threonine and tyrosine residues. Induces aggregation of TAU.

Target: TTBK1**Reactivity:** Human**Host:** Rabbit**Clonality:** Polyclonal**Tested Applications:** WB**Recommended dilutions:** Optimal dilutions/concentrations should be determined by the end user.**Immunogen:** Human TTBK1.**Purification:** Peptide Affinity Purified Rabbit Polyclonal Antibody.**Isotype:** IgG**Conjugation:** Unconjugated**Specificity:** This TTBK1 antibody is generated from rabbits immunized with a KLH conjugated synthetic peptide between 667-695 amino acids from the Central region of human TTBK1.**Storage:** Aliquot and store at -20 °C. Avoid repeated freeze/thaw cycles.**Swiss Prot:** [Q5TCY1](#)**Buffer:** PBS with 0.09% (W/V) sodium azide. This antibody is purified through a protein A column, followed by peptide affinity purification.

Abbexa Ltd, Innovation Centre, Cambridge Science Park, Cambridge, CB4 0EY, UK
Telephone: +44 (0) 1223 755950 - Fax: +44 (0) 1223 755951 - E-Mail: info@abbexa.com

Note: This product is for research use only.