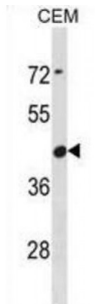


COBW Domain-Containing Protein 6 (CBWD6) Antibody

Catalogue No.: abx031216



The function of this protein is unknown.

Target: CBWD6

Reactivity: Human

Host: Rabbit

Clonality: Polyclonal

Tested Applications: WB

Recommended dilutions: Optimal dilutions/concentrations should be determined by the end user.

Immunogen: Human CBWD6.

Purification: Peptide Affinity Purified Rabbit Polyclonal Antibody.

Isotype: IgG

Conjugation: Unconjugated

Specificity: This CBWD6 antibody is generated from rabbits immunized with a KLH conjugated synthetic peptide between 193-221 amino acids from the Central region of human CBWD6.

Storage: Aliquot and store at -20 °C. Avoid repeated freeze/thaw cycles.

Swiss Prot: [Q4V339](#)

Buffer: PBS with 0.09% (W/V) sodium azide. This antibody is purified through a protein A column, followed by peptide affinity purification.

Note: This product is for research use only.