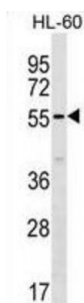


SAMM50 Sorting And Assembly Machinery Component (SAMM50) Antibody

Catalogue No.: abx030839



SAMM50 is a component of the sorting and assembly machinery (SAM) complex of the outer mitochondrial membrane. The SAM complex has a role in integrating beta-barrel proteins into the outer mitochondrial membrane (Humphries et al., 2005 [PubMed 15644312]).

Target: SAMM50

Reactivity: Human

Host: Rabbit

Clonality: Polyclonal

Tested Applications: WB

Recommended dilutions: Optimal dilutions/concentrations should be determined by the end user.

Immunogen: Human SAMM50.

Purification: Peptide Affinity Purified Rabbit Polyclonal Antibody.

Isotype: IgG

Conjugation: Unconjugated

Specificity: This SAMM50 antibody is generated from rabbits immunized with a KLH conjugated synthetic peptide between 163-189 amino acids from the Central region of human SAMM50.

Storage: Aliquot and store at -20 °C. Avoid repeated freeze/thaw cycles.

Swiss Prot: [Q9Y512](#)

Gene Symbol: SAMM50

Abbexa Ltd, Innovation Centre, Cambridge Science Park, Cambridge, CB4 0EY, UK
Telephone: +44 (0) 1223 755950 - Fax: +44 (0) 1223 755951 - E-Mail: info@abbexa.com

Buffer: PBS with 0.09% (W/V) sodium azide. This antibody is purified through a protein A column, followed by peptide affinity purification.

Note: This product is for research use only.